



# Louis Thompson Road Tightline

**WELCOME TO OUR VIRTUAL PUBLIC MEETING!**

**October 27, 2022 | 5-6 pm**



# How to Participate

- Share your questions and comments using the Q&A box
- Let us know if you have any access needs
- If technical issues arise...
- Tell us more about you to help improve our outreach
- MentiMeter – *Share your input in real-time!*



# Make your voice heard!

---



**How did you hear about this virtual public meeting?**

*Scan the QR code, follow the link, or go to **menti.com** and enter the code **8675 1768***

# Make your voice heard!

## How did you hear about this virtual public meeting?



Facebook post

Flyer

Mailer from the city.

Flyer

Drastically improve access up and down Louis Thompson

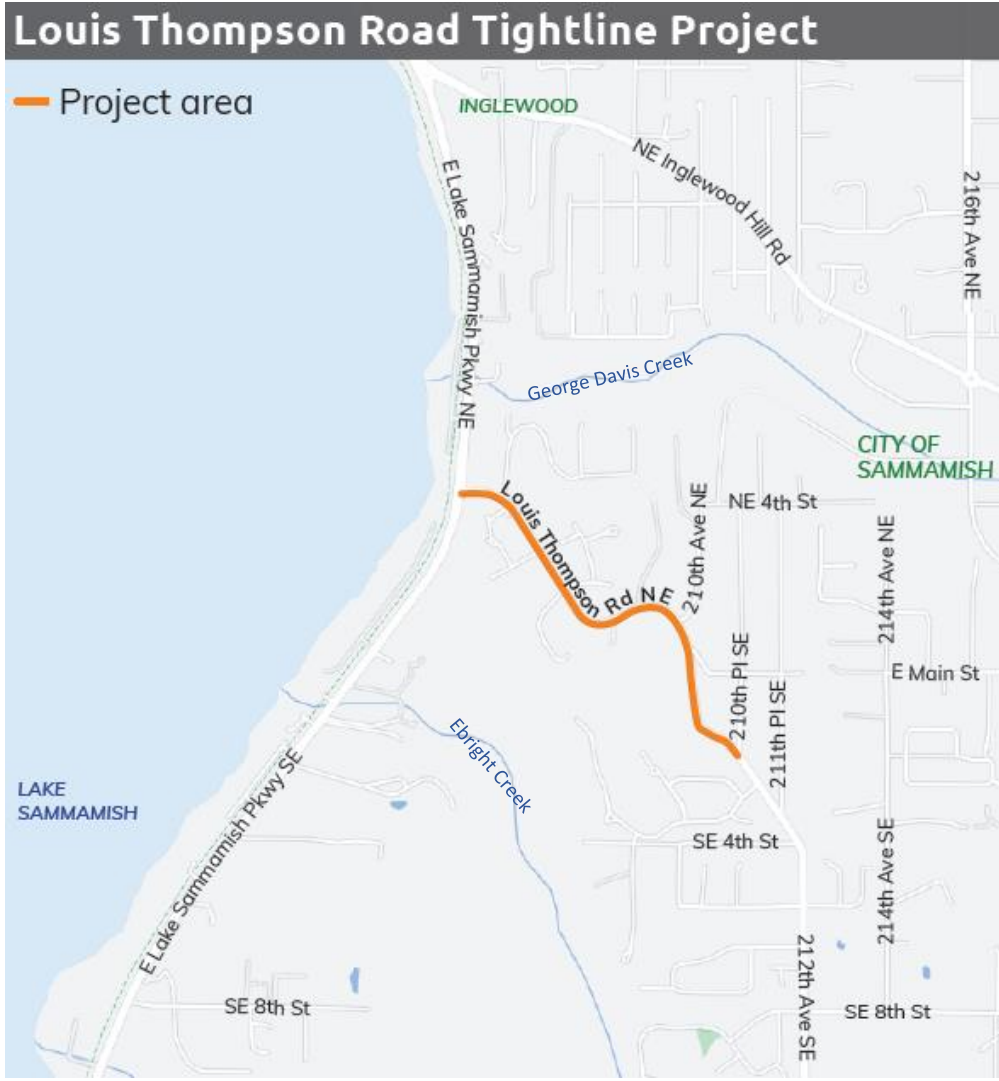
# Tonight's Agenda

- Welcome
- Project background and goals
- Project design updates
- Project timeline and next steps
- Stay connected
- Q&A



# Project Background

- Louis Thompson Road is a crucial connection route for Sammamish
- Uncontrolled stormwater runoff impacts
  - Flooding
  - Erosion
  - Landslides
- Opportunities to improve safety for people walking and biking



# Project Goals

- Improve existing stormwater system
  - Upgrade system to increase capacity and accommodate runoff
  - Replace ditches with pipes to reduce flooding erosion
  - Improve water quality
- Non-motorized improvements
  - Connect communities to Lake Sammamish
  - Sidewalks, bike lane, and shoulder widening



# Community Input and City Council Direction

- Community input
  - Design alternatives survey: 110 responses
  - Interactive map: 58 pins place
  - May 2022 public meeting: 30+ attendees
- City Council direction
  - Council confirmed preferred design on September 20
  - Widen the shoulder on the south (uphill) side of the road
  - Increase the width of the striping on the south (uphill) side of the road

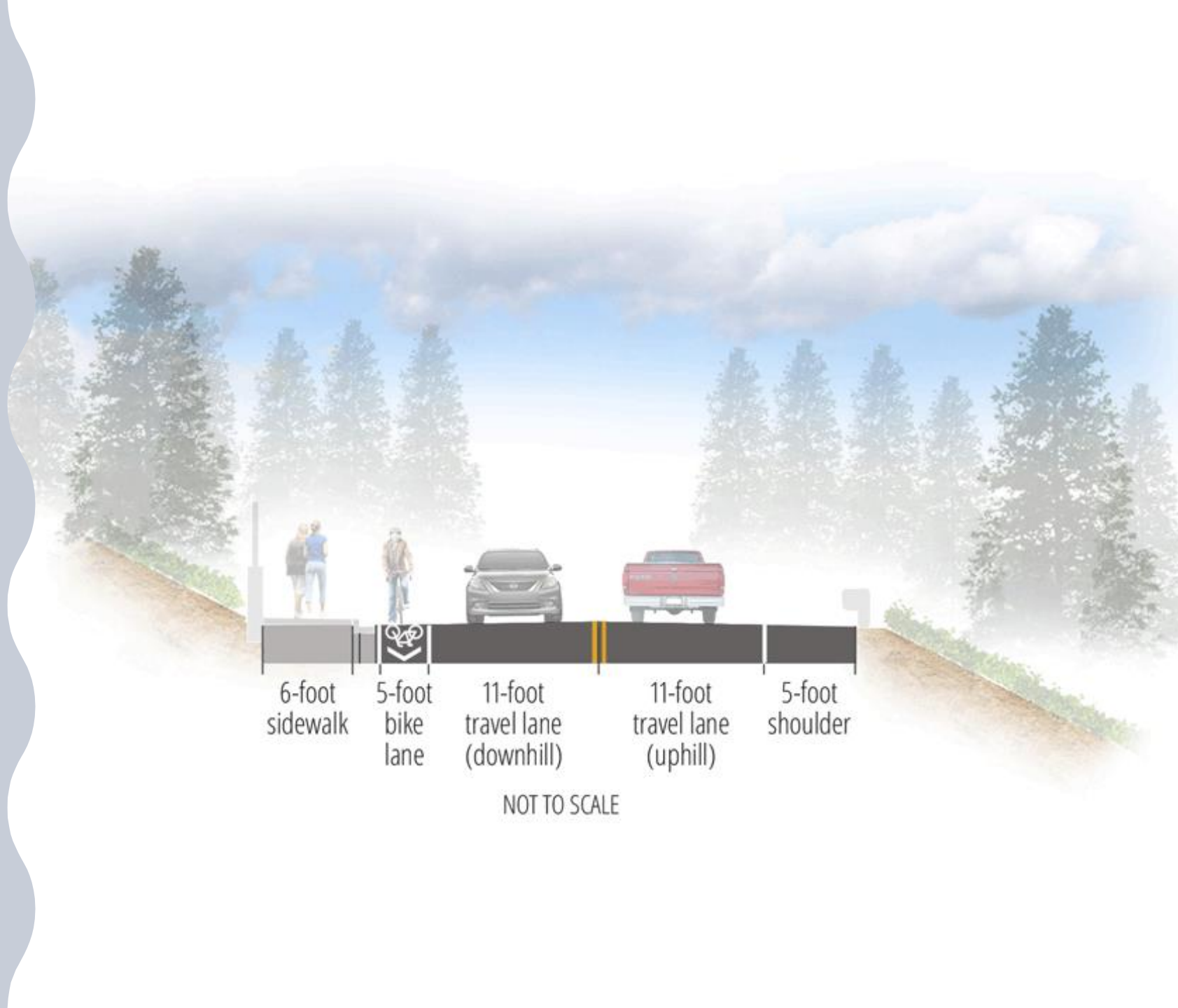




# Selected Design Alternative

**Alternative 4 was selected to move forward into final design**

- Upgrading stormwater systems
- Adding sidewalk and bike lane on the north (downhill) side of the road
- Minor widening on the south (uphill) side of the road to ensure a 5-foot shoulder



# Make your voice heard!

---



**How will the new features on Louis Thompson Road make it easier for you to walk and bike?**

*Scan the QR code, follow the link, or go to [menti.com](https://www.menti.com) and enter the code **8675 1768***

# Make your voice heard!

## How will the new features on Louis Thompson Road make it easier for you to walk and bike?



It will make it easier and safer for biking and walking

I bike and it won't. The bike lane is on the wrong side. I can talk about this in more detail if you like.

Easier access to Lake Sammamish trail.

Dramatically improve access to east lake Sammamish bike path and make my bike commute much safer

Matches what is on Inglewood Hill Stormwater retrofit, without planter strip due to slopes. Very good!

The sidewalk will help me feel safe walking to the East Lake Sammamish Trail.

# Project Timeline and Next Steps



2022	Q1	Project kick-off
	Q2	Public meeting 1 Preferred alternative selection
	Q3	Project scope defined
	Q4	Public meeting 2 <b>(WE ARE HERE)</b>
2023	Q1	60 percent design
	Q2	Property and right-of-way coordination
	Q3	90 percent design
	Q4	100 percent design
2024	Q1	Public meeting 3
	Q2	Anticipated start of construction
	Q3	
	Q4	
2025	Q1	
	Q2	
	Q3	Anticipated end of construction

# Stay Involved, Stay Connected

- Visit [Connect.Sammamish.us/louis-thompson-tightline](https://Connect.Sammamish.us/louis-thompson-tightline)
  - Learn more about the project, design, and next steps
  - Tell us more about you to
  - Sign up for project updates
- Have questions? Want more information?
  - **Jed Ireland, Senior Project Engineer**  
PHONE: (425) 295-0563  
EMAIL: [jireland@sammamish.us](mailto:jireland@sammamish.us)

# We want to hear from you - share your questions!

## Share your questions and comments using the Q&A box

What is the history of this project?

How is the project funded?

When will design be wrapped up?

When would construction happen?

How are properties impacted?





Thanks for joining us!

[Connect.Sammamish.us/louis-thompson-tightline](https://Connect.Sammamish.us/louis-thompson-tightline)



Thank you to our funding partners

