

# STORMWATER FACILITY INFORMATION FORM

---

## ABOUT THE STORMWATER FACILITY INFORMATION FORM

---

The Stormwater Facility Information Form (FIF) is a document used to track, identify and maintain stormwater facilities. Each FIF should have an attached sketch showing all of the facility's stormwater components.

The submitted sketch is used for inspection and maintenance purposes and should not be submitted as a typical site plan, rather a scaled down version only depicting relevant storm system and site information.

If the facility will have any vegetation control for which the City will be responsible, please include a second sketch showing the mow area and the square footage to be mowed.

**Please complete one copy of this form for each facility and include a Facility Sketch (see examples on pages 3 and 4) with each one.**

## Submittal Instructions

Complete & save this form before uploading it to [MyBuildingPermit.com](http://MyBuildingPermit.com) in the "File Upload" section along with the rest of the submittal documents.

## Resources

[King County iMap](#)  
[Sammamish Property Tool](#)

## Questions?

[Submit Project Guidance](#)  
[Visit the Permit Center](#)

City of Sammamish  
801 228th Ave SE  
Sammamish, WA 98075  
[www.sammamish.us](http://www.sammamish.us)



# STORMWATER FACILITY INFORMATION FORM

## SUBMITTAL CHECKLIST

Please upload one PDF with the title *Stormwater Facility Information* that includes the below items:

Completed Stormwater Facility Information Form (one for each facility)

Required Facility Sketch (see Attachment 1 for example)

Please include the following:

- North arrow
- A legend
- The development's name & location
- Relevant storm system and site information (pipes, catch basins, control structures, vaults, dispersion devices, etc.)

Facility Sketch with Vegetation Control (if applicable – see Attachment 2 for example)

Please include the following:

- North arrow
- A legend
- The development's name & location
- The mow area and the square footage to be mowed

THIS SECTION TO BE COMPLETED BY CITY STAFF

Facility Numbers: DS \_\_\_\_\_

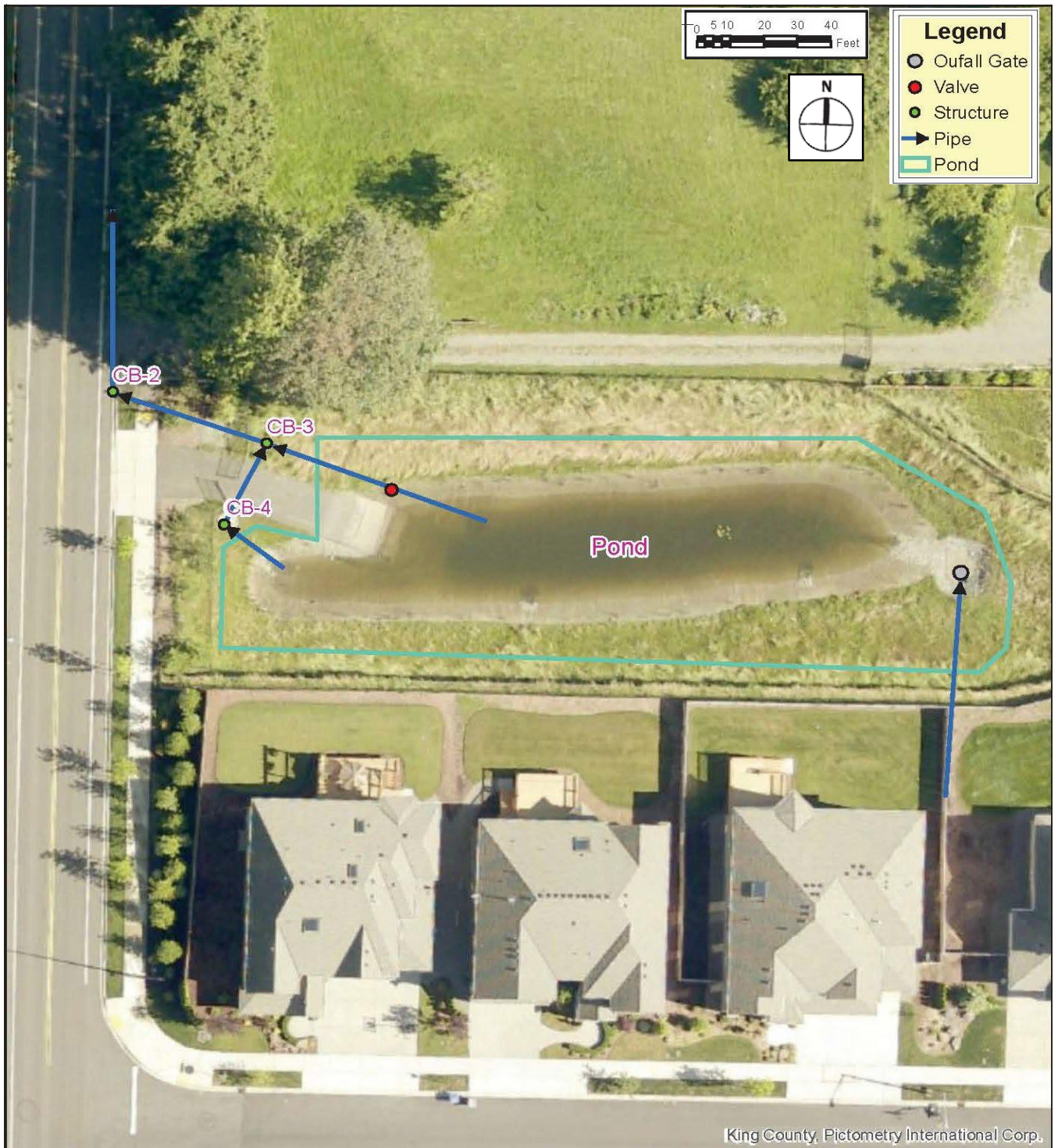
# STORMWATER FACILITY INFORMATION FORM

## ATTACHMENT 1: REQUIRED FACILITY SKETCH (SAMPLE)

Facility Number: \_\_\_\_\_ Location: \_\_\_\_\_

Development Name: \_\_\_\_\_ Drawn By: \_\_\_\_\_

Date: \_\_\_\_\_



King County, Pictometry International Corp.



# STORMWATER FACILITY INFORMATION FORM

## ATTACHMENT 2: FACILITY SKETCH WITH VEGETATION CONTROL (SAMPLE)

Facility Number: \_\_\_\_\_ Location: \_\_\_\_\_  
Development Name: \_\_\_\_\_ Drawn By: \_\_\_\_\_  
Date: \_\_\_\_\_ Area to be Mowed: \_\_\_\_\_  
(Square Feet)

