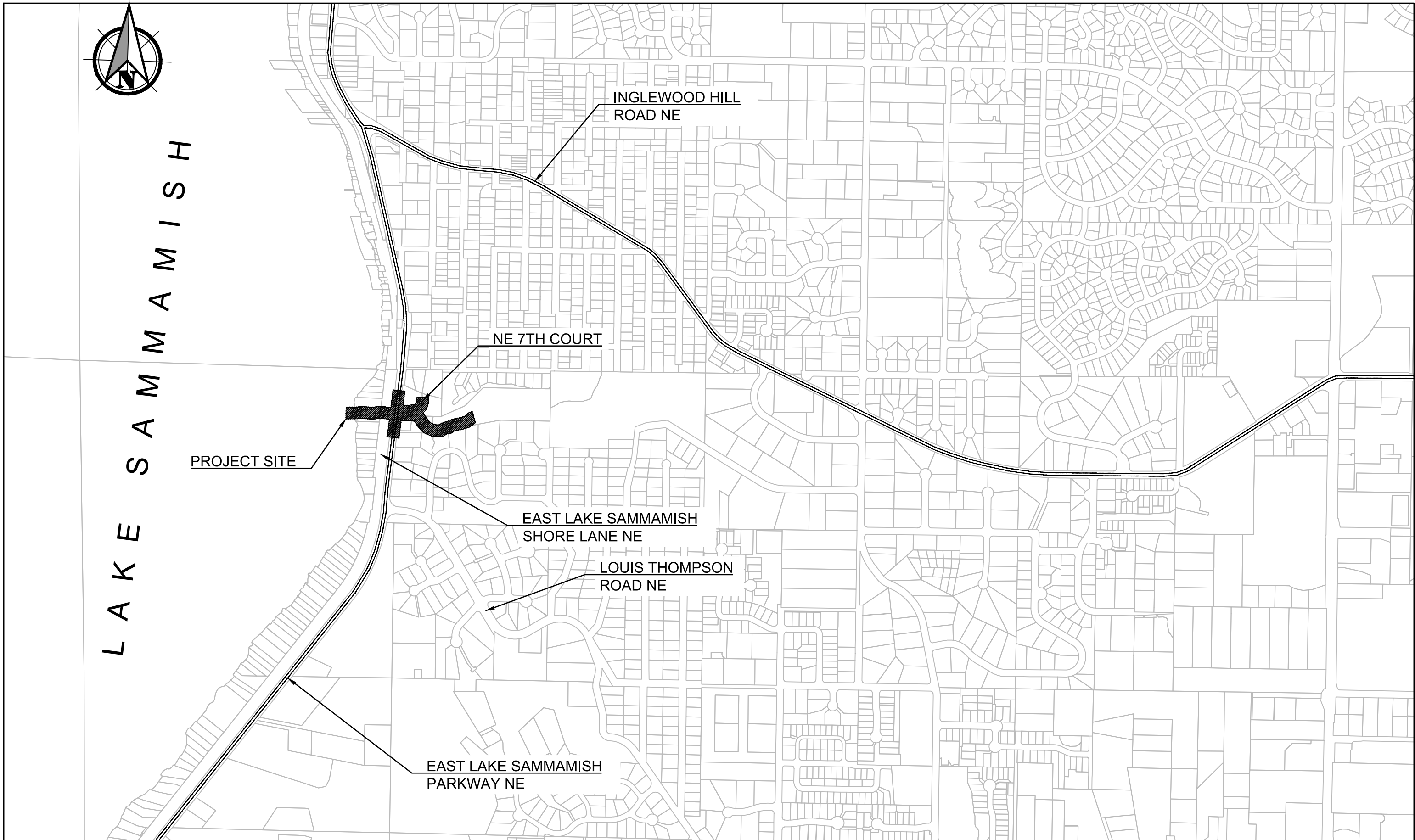




# GEORGE DAVIS CREEK FISH PASSAGE AND STREAM RESTORATION PROJECT

## CITY OF SAMMAMISH



SITE LOCATION MAP

SCALE: 1" = 500'

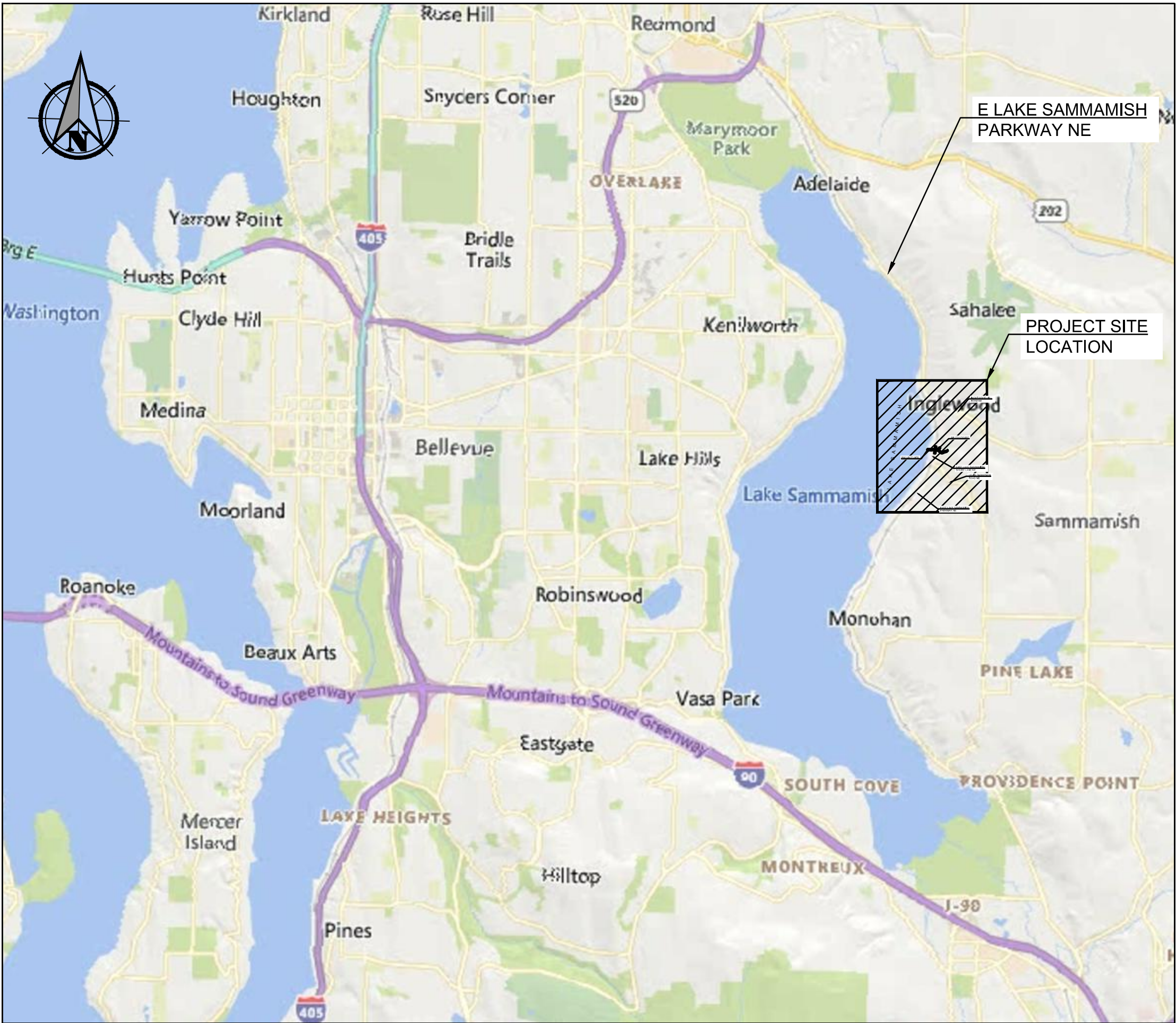
GEORGE DAVIS CREEK FISH PASSAGE AND STREAM RESTORATION PROJECT ENVIRONMENTAL PROJECT DATA	
PROJECT DESCRIPTION	THIS PROJECT WILL REMOVE AN EXISTING STORMWATER BYPASS SYSTEM AND BARRIERS TO FISH MIGRATION ON GEORGE DAVIS CREEK AND WILL IMPROVE FISH PASSAGE FROM LAKE SAMMAMISH TO A POINT APPROXIMATELY 600 FEET EAST OF EAST LAKE SAMMAMISH PARKWAY NE
SITE AREA	
DISTURBED AREA	
NEW PLUS IMPROVED IMPERVIOUS AREA	
SITE SOIL CLASSIFICATION	
RECEIVING WATER BODY	
RECEIVING WATER BODY LIMITATIONS	
WATERSHED (8-DIGIT HUC)	
TYPICAL STREAM FLOW MAXIMUM	
IN-WATER WORK WINDOW	

PHONE NUMBERS:

FIRE / MEDIC 1 / POLICE	911
SAMMAMISH PUBLIC WORKS	(425) 295-0500
WATER (SAMMAMISH PLATEAU WATER & SEWER DISTRICT)	(425) 392-6256
SEWER (SAMMAMISH PLATEAU WATER & SEWER DISTRICT)	(425) 392-6256
POWER (PUGET SOUND ENERGY)	(425) 417-9188
GAS (PUGET SOUND ENERGY)	(425) 417-9188
COMMUNICATIONS (COMCAST)	(425) 263-5348
COMMUNICATIONS (CENTURY LINK)	(206) 261-1402
U.S. POST OFFICE, ISSAQUAH POSTMASTER	(425) 837-8795

SITE VICINITY MAP

SCALE: 1" = 1 MILE



OWNER CONTACT INFORMATION:

OWNER:	CITY OF SAMMAMISH 801 228TH AVE SE SAMMAMISH, WA 98075 PHONE: (425) 295-0500
MAYOR:	KAREN HOWE KHOWE@SAMMAMISH.US
DEPUTY MAYOR:	AMY LAM ALAM@SAMMAMISH.US
CITY COUNCIL:	KALI CLARK ROISIN O'FARRELL SID GUPTA KENT TREEN PAM STUART
CITY MANAGER:	SCOTT MACCOLL
CITY ENGINEER:	LEI WU
DIRECTOR OF PUBLIC WORKS:	AUDRIE STARSY
PROJECT MANAGER:	TOBY COENEN TCOENEN@SAMMAMISH.US

ENGINEER CONTACT INFORMATION:

CIVIL ENGINEER:	PBS ENGINEERING + ENVIRONMENTAL 22833 SE BLACK NUGGET ROAD, SUITE 140 ISSAQUAH, WA 98029 (425) 654-8775 (866) 727-0140 (FAX)
PROJECT MANAGER:	HOD WELLS, PE, HOD.WELLS@PBSUSA.COM (503) 417-7723
PROJECT ENGINEER:	SASH RIJAL, PE SASH.RIJAL@PBSUSA.COM (425) 654-8766

PBS Engineering and Environmental Inc.  
22833 SE Black Nugget Road  
Suite 140  
Issaquah, WA 98029  
(425) 654-8775  
pbsusa.com



COVER SHEET FOR:  
**GEORGE DAVIS CREEK FISH PASSAGE PROJECT**  
SAMMAMISH, WASHINGTON



Know what's below.  
Call before you dig.

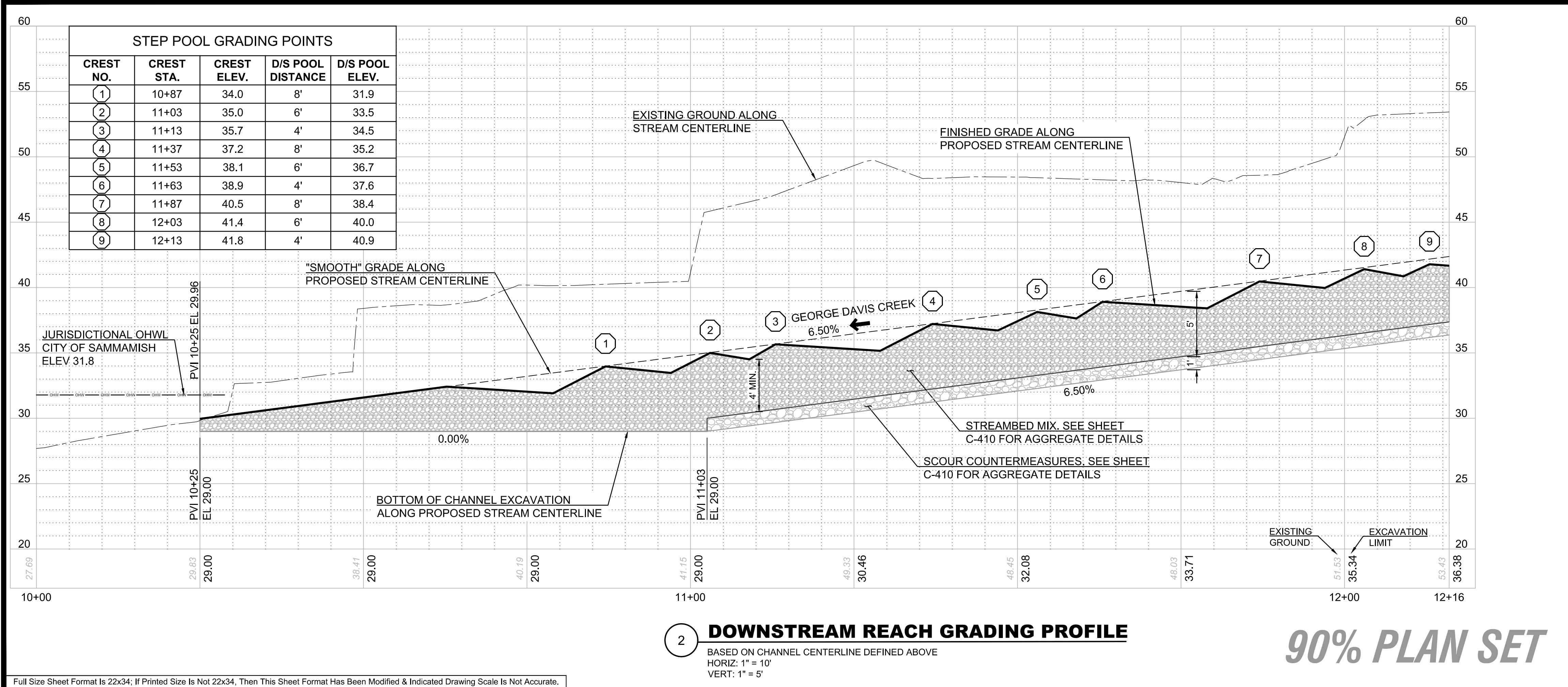
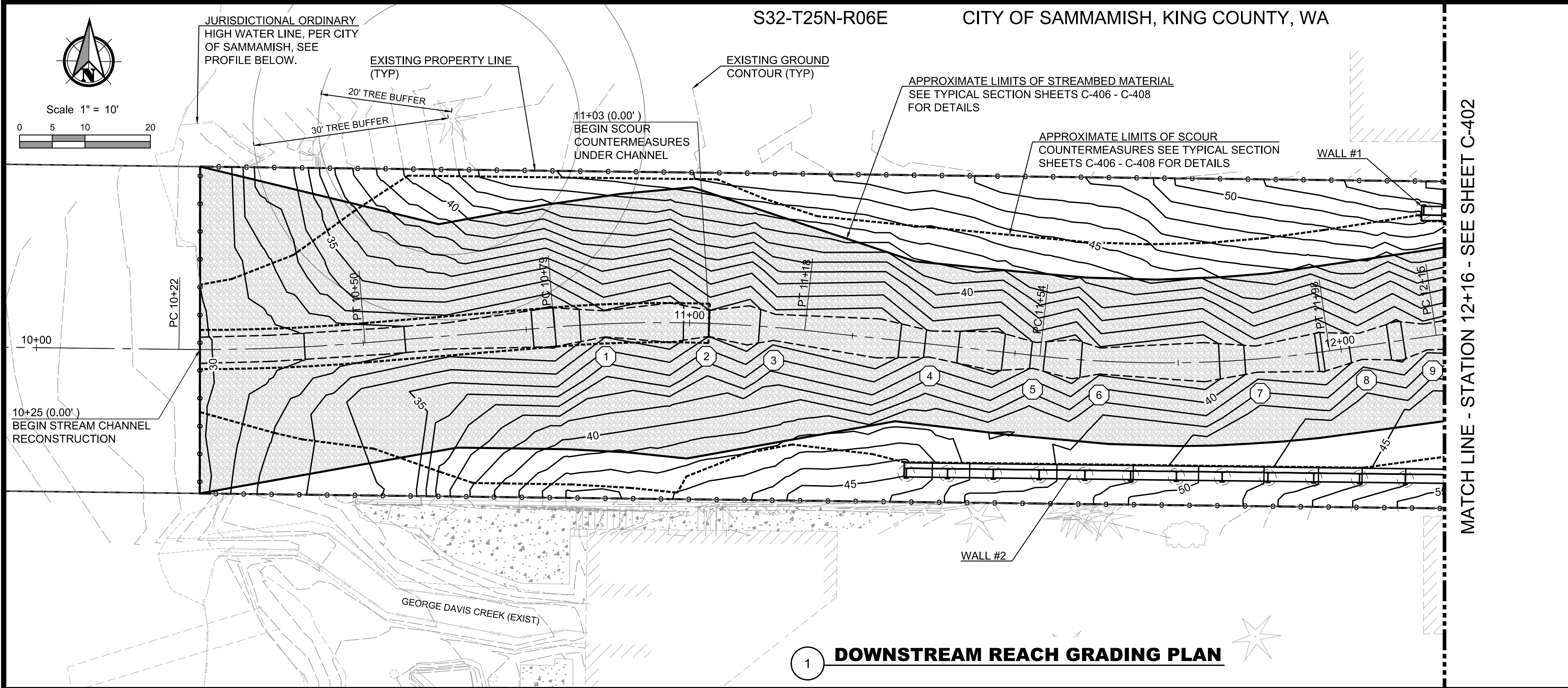


DESIGNED:	PCB/SR
CHECKED:	CAB/CMK
JUNE 2025	45015-004

SHEET ID  
**C-001**

SHEET 1 OF 105

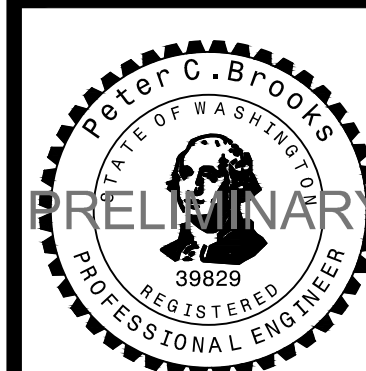
Filepath: L:\Projects\45004\501545015-Civil\CAD\WorkingSheets\C-401-C-404\_GDC-PP.dwg Layout Tab: C-401 DOWNSTREAM CREEK PLAN AND PROFILE User: Owen Portka CAD Plot Date/Time: 6/12/2025 6:37:26 PM



- STREAMBED CONSTRUCTION NOTES:**
1. CONSTRUCT STREAMBED WORKING DOWNSTREAM TO UPSTREAM.
  2. STREAMBED AND SCOUR COUNTERMEASURE MATERIALS SHALL BE INSTALLED AS SHOWN ON THE PLANS OR AS DIRECTED BY THE ENGINEER.
  3. SEE SHEET C-410 FOR SCOUR COUNTERMEASURE AND STREAMBED MATERIAL GRADATIONS.
  4. SCOUR COUNTERMEASURE PLACEMENT ALONG BANKS BEGINS AT STA 10+25 AND ENDS AT STA 12+48 (SHEET C-402).
  5. SCOUR COUNTERMEASURE PLACEMENT BELOW STREAMBED BEGINS AT STA 11+03 AND ENDS AT STA 12+48 (SHEET C-402).
  6. STREAMBED GRADING BEGINS AT STA 10+25 AND ENDS AT STA 12+48 (SHEET C-402).
  7. SEE SHEETS C-406 - C-408 FOR TYPICAL SECTIONS.
  8. SCOUR COUNTERMEASURE AND STREAMBED MATERIALS SHALL BE PLACED IN 12-INCH LIFTS AND ADDITIONAL SEALING MIX WASHED IN PER THE SPECIFICATIONS TO ENSURE SEALING.
  9. STREAMBED MATERIAL SHALL BE GRADED AS SHOWN ON PLANS. DEPTHS SHALL BE NO MORE THAN XX-FEET OR EXCEED YY-FEET.

No.	Revision	Date	By	App'd

DOWNSTREAM CREEK PLAN AND PROFILE FOR:  
**GEORGE DAVIS CREEK FISH PASSAGE PROJECT**  
SAMMAMISH, WASHINGTON



DESIGNED:  
PCB/SR

CHECKED:  
CAB/CMK

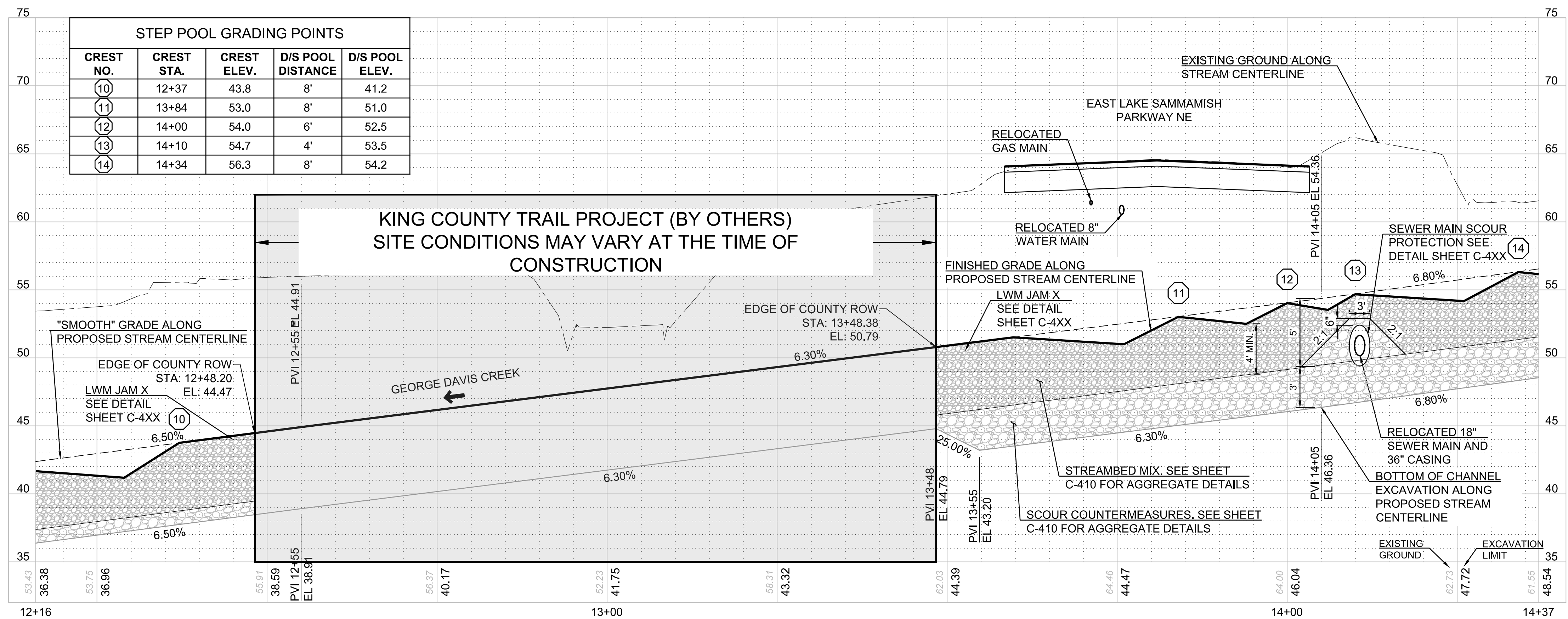
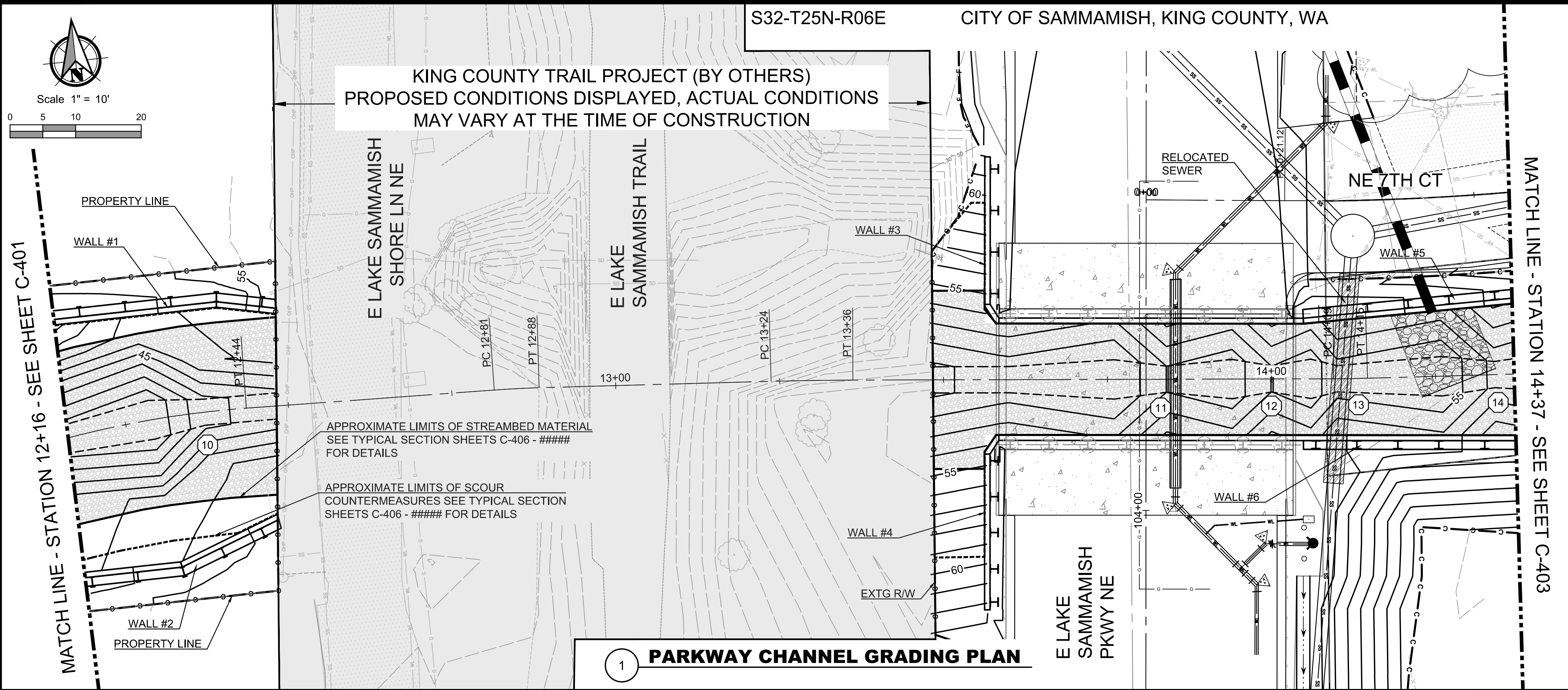
JUNE 2025  
45015-004

SHEET ID  
**C-401**

SHEET **22** OF **105**



Filepath: L:\Projects\45000\45015\45015-004\Civil\CAD\WorkingSheets\C-401-C-404\_GDC-PP.dwg Layout Tab: C-402 CROSSINGS REACH CREEK PLAN AND PROFILE User: Owen Pavlka CAD Plot Date/Time: 6/4/2025 9:37:41 PM



90% PLAN SET

**STREAMBED CONSTRUCTION NOTES:**

1. CONSTRUCT STREAMBED WORKING DOWNSTREAM TO UPSTREAM.
2. STREAMBED AND SCOUR COUNTERMEASURE MATERIALS SHALL BE INSTALLED AS SHOWN ON THE PLANS OR AS DIRECTED BY THE ENGINEER.
3. SEE SHEET C-410 FOR SCOUR COUNTERMEASURE AND STREAMBED MATERIAL GRADATIONS.
4. SCOUR COUNTERMEASURE PLACEMENT ALONG BANKS BEGINS AT STA 10+25 AND ENDS AT STA 12+48 (SHEET C-402).
5. SCOUR COUNTERMEASURE PLACEMENT BELOW STREAMBED BEGINS AT STA 11+03 AND ENDS AT STA 12+48 (SHEET C-402).
6. STREAMBED GRADING BEGINS AT STA 10+25 AND ENDS AT STA 12+48 (SHEET C-402).
7. SEE SHEETS C-406 - C-408 FOR TYPICAL SECTIONS.
8. SCOUR COUNTERMEASURE AND STREAMBED MATERIALS SHALL BE PLACED IN 12-INCH LIFTS AND ADDITIONAL SEALING MIX WASHED IN PER THE SPECIFICATIONS TO ENSURE SEALING.
9. STREAMBED MATERIAL SHALL BE GRADED AS SHOWN ON PLANS. DEPTHS SHALL BE NO MORE THAN XX-FEET OR EXCEED YY-FEET.

No.	Revision	Date	By	App'd



CROSSINGS REACH CREEK PLAN AND PROFILE FOR:  
**GEORGE DAVIS CREEK FISH PASSAGE PROJECT**  
SAMMAMISH, WASHINGTON



Know what's below.  
Call before you dig.



DESIGNED:  
PCB/SR

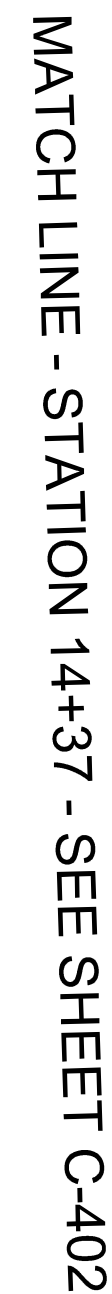
CHECKED:  
CAB/CMK

JUNE 2025  
45015-004

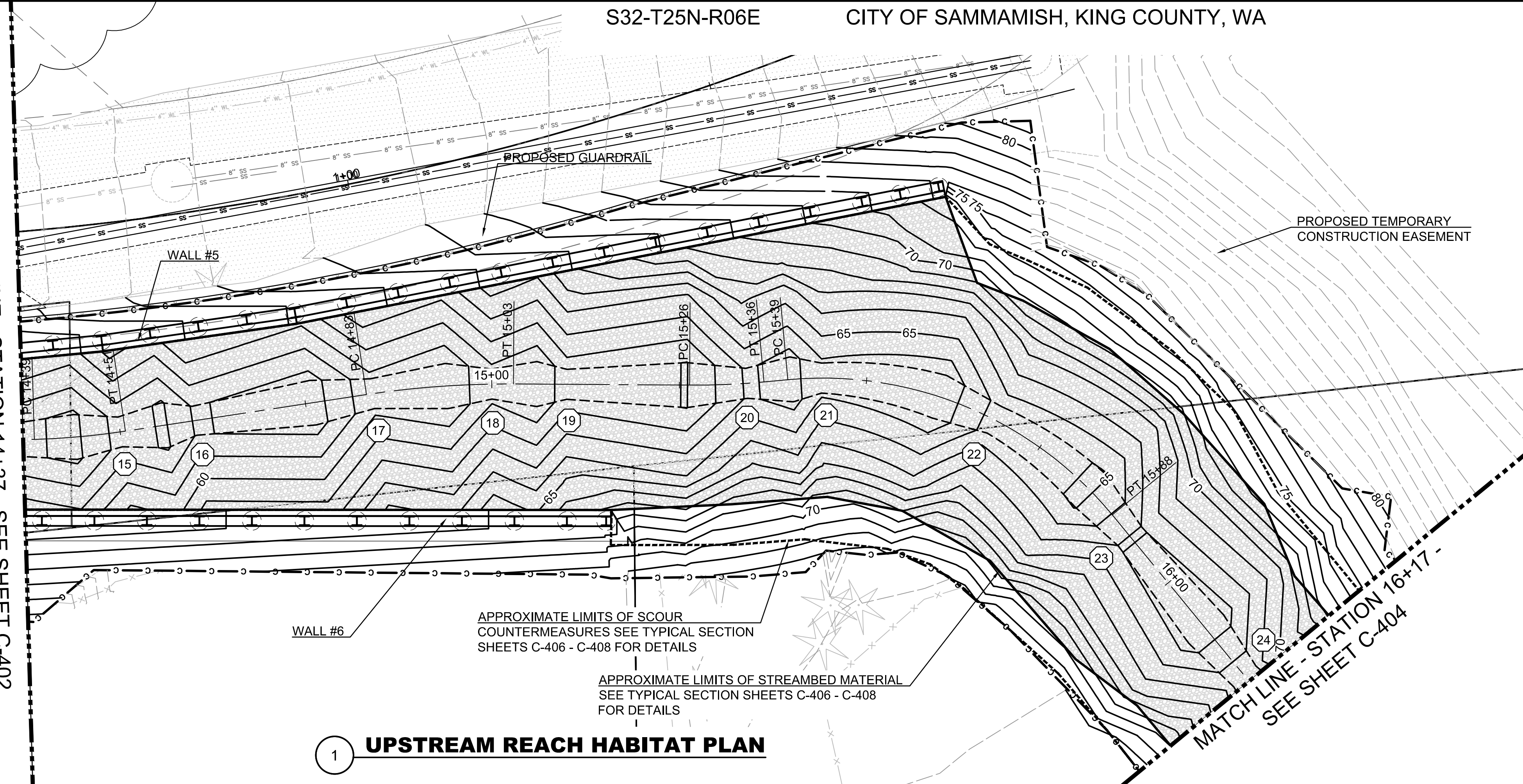
SHEET ID

**C-402**

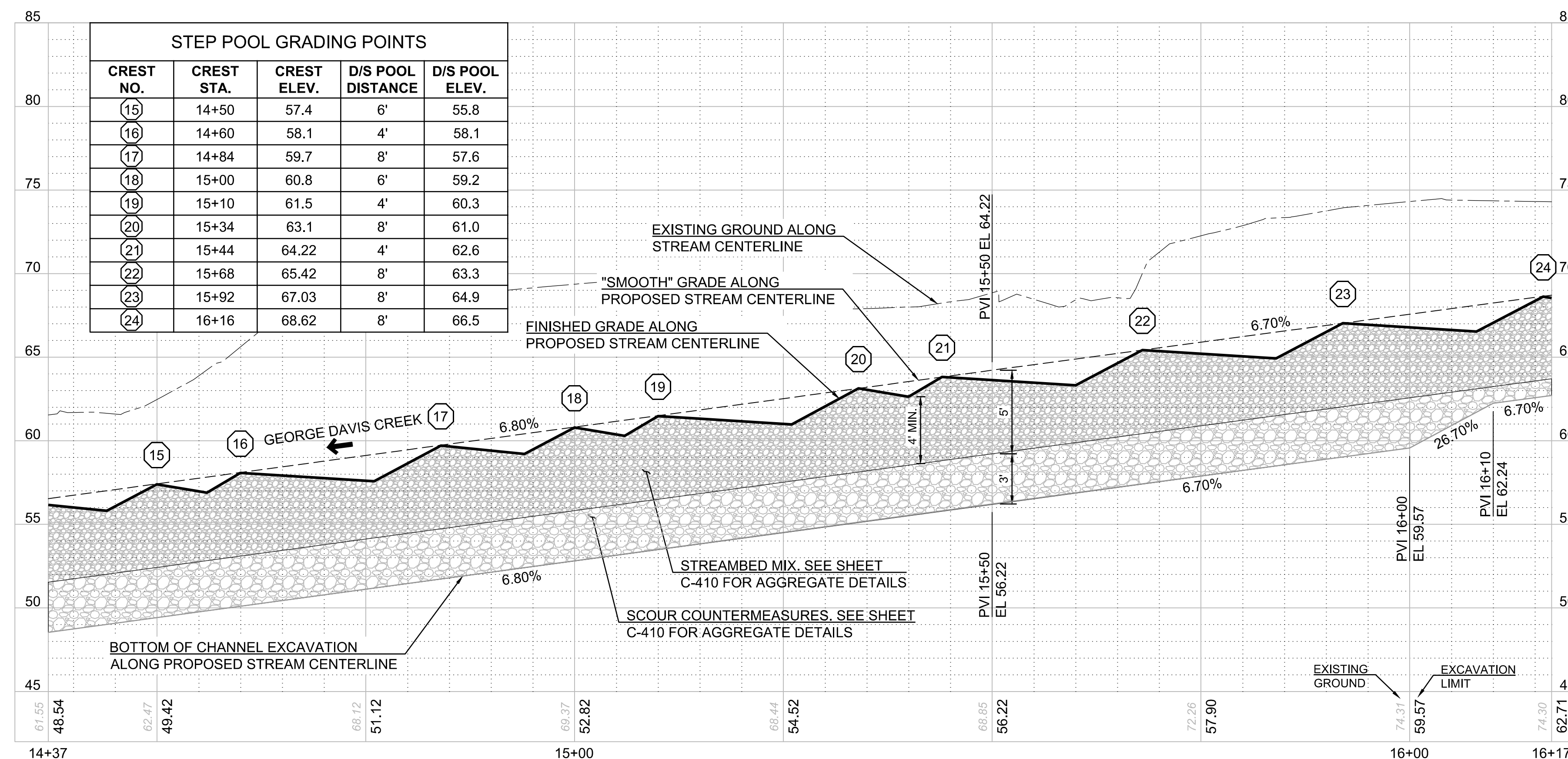
SHEET **23** OF **105**



CITY OF SAMMAMISH, KING COUNTY, WA



## 1 UPSTREAM REACH HABITAT PLAN



## 2 EAST CREEK CHANNEL PROFILE - LOWER

HORIZ: 1" = 10'  
VERT: 1" = 5'

## 90% PLAN SET

No.	Revision	Date	By	App'd

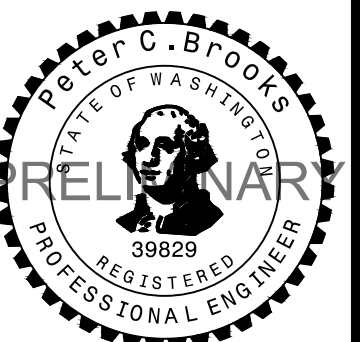
1. CONSTRUCT STREAMBED WORKING DOWNSTREAM TO UPSTREAM.
2. STREAMBED AND SCOUR COUNTERMEASURE MATERIALS SHALL BE INSTALLED AS SHOWN ON THE PLANS OR AS DIRECTED BY THE ENGINEER.
3. SEE SHEET C-410 FOR SCOUR COUNTERMEASURE AND STREAMBED MATERIAL GRADATIONS.
4. SCOUR COUNTERMEASURE PLACEMENT ALONG BANKS BEGINS AT STA 10+25 AND ENDS AT STA 12+48 (SHEET C-402).
5. SCOUR COUNTERMEASURE PLACEMENT BELOW STREAMBED BEGINS AT STA 11+03 AND ENDS AT STA 12+48 (SHEET C-402).
6. STREAMBED GRADING BEGINS AT STA 10+25 AND ENDS AT STA 12+48 (SHEET C-402).
7. SEE SHEETS C-406 - C-408 FOR TYPICAL SECTIONS.
8. SCOUR COUNTERMEASURE AND STREAMBED MATERIALS SHALL BE PLACED IN 12-INCH LIFTS AND ADDITIONAL SEALING MIX WASHED IN PER THE SPECIFICATIONS TO ENSURE SEALING.
9. STREAMBED MATERIAL SHALL BE GRADED AS SHOWN ON PLANS. DEPTHS SHALL BE NO MORE THAN XX-FEET OR EXCEED YY-FEET.



**LOWER UPSTREAM CREEK PLAN AND PROFILE FOR:  
GEORGE DAVIS CREEK FISH PASSAGE PROJECT  
SAMMAMISH, WASHINGTON**



Know what's **below**.  
**Call** before you dig.



**DESIGNED:**  
PCB/SR

**CHECKED:**  
CAB/CMK

**JUNE 2025**  
45015-004

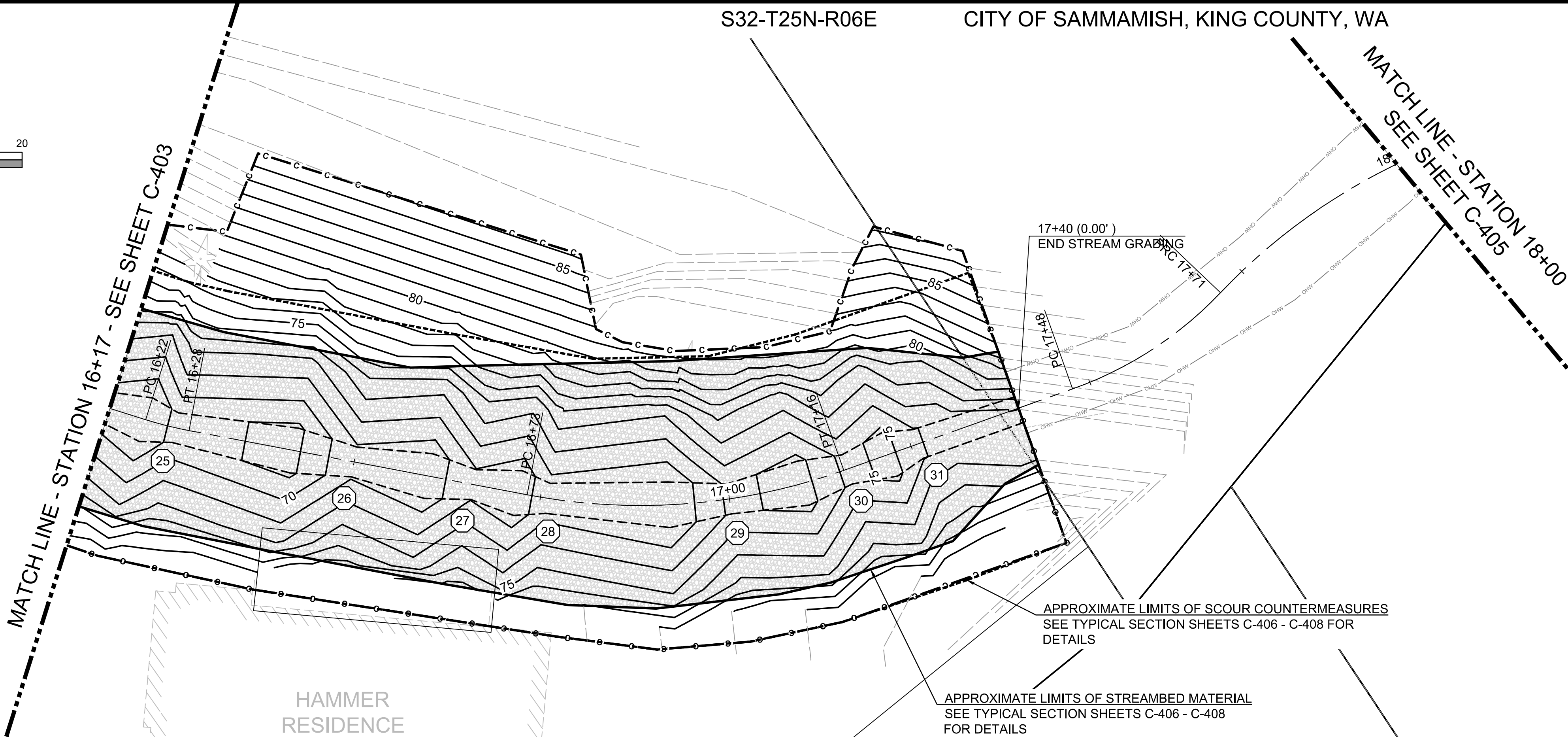
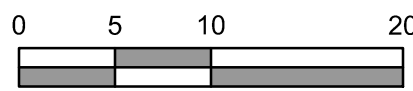
SHEET ID

**C-403**

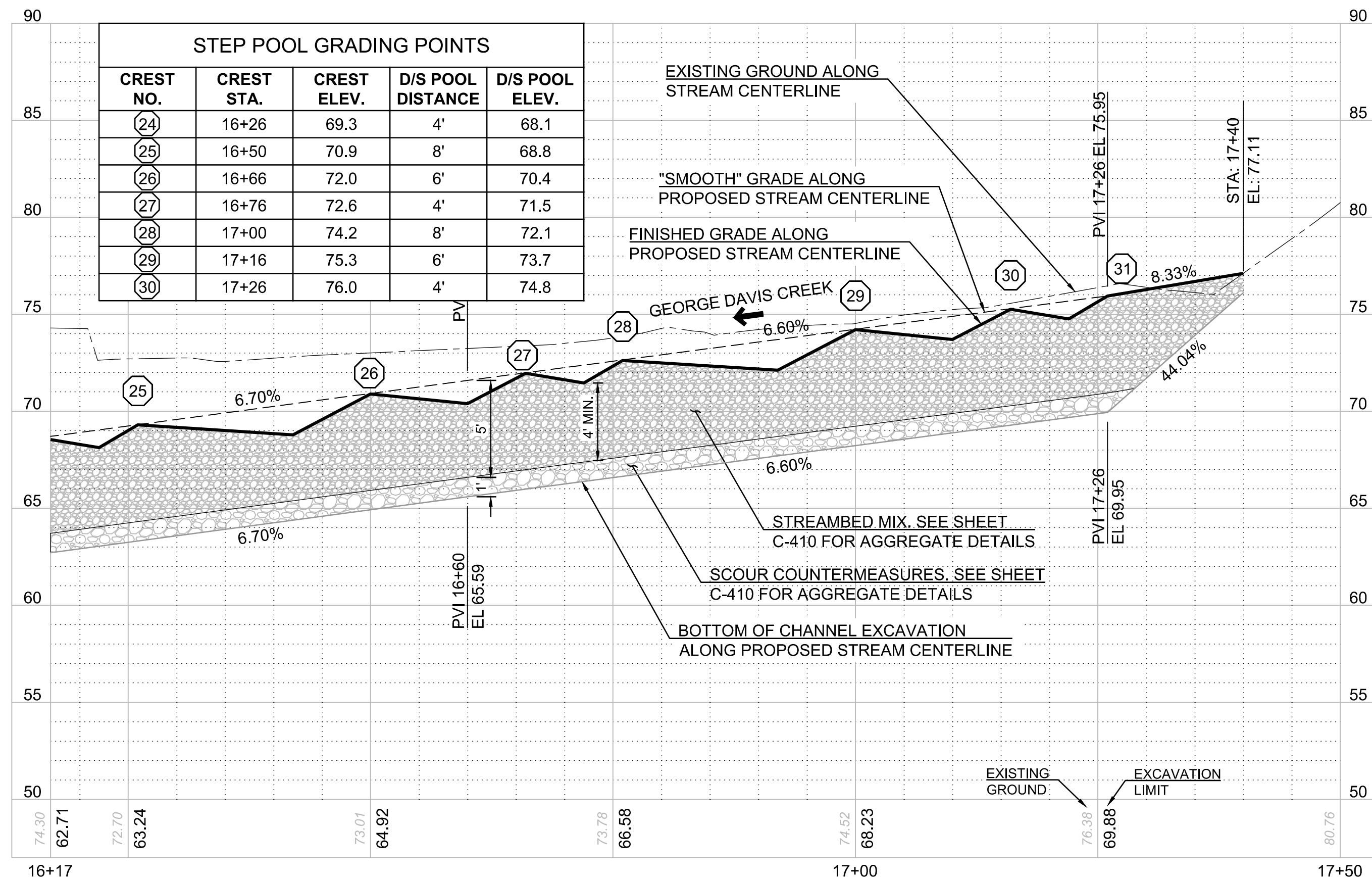
SHEET **24** OF **105**



Scale 1" = 10'



1 EAST CREEK CHANNEL PLAN - UPPER



2 EAST CREEK CHANNEL PROFILE - UPPER

HORIZ: 1" = 10'  
VERT: 1" = 5'

90% PLAN SET

STREAMBED CONSTRUCTION NOTES:

1. CONSTRUCT STREAMBED WORKING DOWNSTREAM TO UPSTREAM.
2. STREAMBED AND SCOUR COUNTERMEASURE MATERIALS SHALL BE INSTALLED AS SHOWN ON THE PLANS OR AS DIRECTED BY THE ENGINEER.
3. SEE SHEET C-410 FOR SCOUR COUNTERMEASURE AND STREAMBED MATERIAL GRADATIONS.
4. SCOUR COUNTERMEASURE PLACEMENT ALONG BANKS BEGINS AT STA 10+25 AND ENDS AT STA 12+48 (SHEET C-402).
5. SCOUR COUNTERMEASURE PLACEMENT BELOW STREAMBED BEGINS AT STA 11+03 AND ENDS AT STA 12+48 (SHEET C-402).
6. STREAMBED GRADING BEGINS AT STA 10+25 AND ENDS AT STA 12+48 (SHEET C-402).
7. SEE SHEETS C-406 - C-408 FOR TYPICAL SECTIONS.
8. SCOUR COUNTERMEASURE AND STREAMBED MATERIALS SHALL BE PLACED IN 12-INCH LIFTS AND ADDITIONAL SEALING MIX WASHED IN PER THE SPECIFICATIONS TO ENSURE SEALING.
9. STREAMBED MATERIAL SHALL BE GRADED AS SHOWN ON PLANS. DEPTHS SHALL BE NO MORE THAN XX-FEET OR EXCEED YY-FEET.



UPPER UPSTREAM CREEK PLAN AND PROFILE FOR:  
**GEORGE DAVIS CREEK FISH PASSAGE PROJECT**  
SAMMAMISH, WASHINGTON



DESIGNED:  
PCB/SR

CHECKED:  
CAB/CMK

JUNE 2025  
45015-004

SHEET ID

**C-404**

SHEET 25 OF 105

No.	Revision	Date	By	App'd

