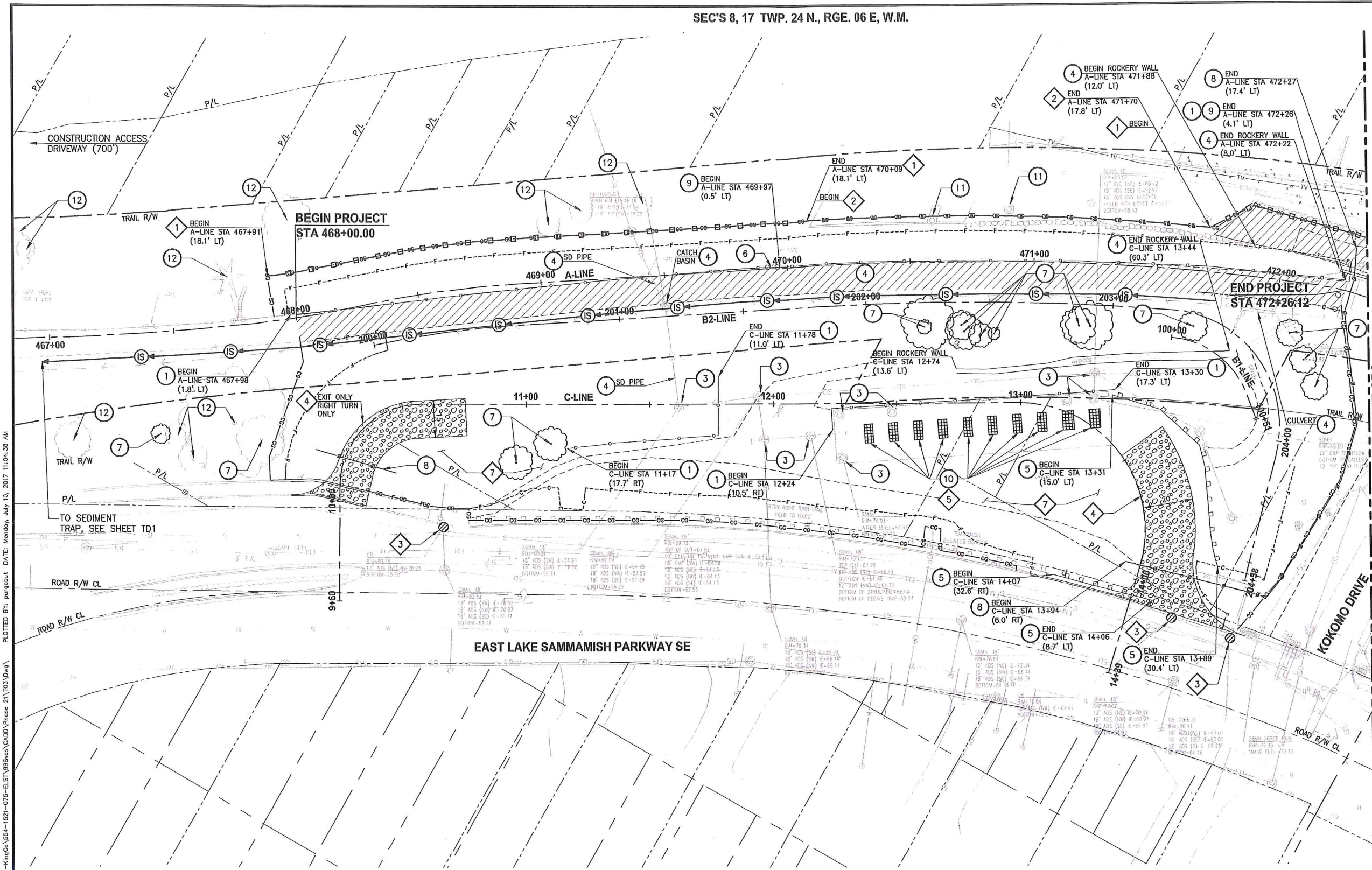


SEC'S 8, 17 TWP. 24 N., RGE. 06 E, W.M.



- SITE PREPARATION NOTES:**
- 1 REMOVE AND SALVAGE CHAIN LINK FENCE.
  - 2 REMOVE AND DISPOSE STAIR.
  - 3 ADJUST MANHOLE TO FINISHED GRADE. (SEE GENERAL NOTE 1)
  - 4 REMOVAL OF STRUCTURE AND OBSTRUCTION.
  - 5 REMOVE AND SALVAGE GUARDRAILS.
  - 6 REMOVE AND SALVAGE CHAIN LINK GATE.
  - 7 REMOVE TREE OR HEDGE.
  - 8 INSTALL TEMPORARY SAFETY FENCE. SEE SPECIAL PROVISIONS.
  - 9 REMOVE AND SALVAGE WOOD BOARD FENCE.
  - 10 ADJUST METAL GRATE TO FINISHED GRADE. (SEE GENERAL NOTE 1)
  - 11 PRESERVE AND PROTECT SEWER LINE.
  - 12 EXISTING TREE TO REMAIN (DO NOT DISTURB).

- TESC NOTES:**
- 1 SILT FENCE PER WSDOT STANDARD DETAIL 1-30.15-02.
  - 2 TRIANGLE SILT DIKE.
  - 3 STORM DRAIN INLET PROTECTION, PER WSDOT STANDARD DETAIL 1-40.20-00.
  - 4 STABILIZED CONSTRUCTION ENTRANCE, PER WSDOT STANDARD DETAIL 1-80.10-02.
  - 5 METAL GRATE INLET PROTECTION, SEE DETAIL SHEET TD1.
  - 6 TEMPORARY BYPASS.
  - 7 STAGING AND STOCKPILING AREA (ADJUSTED BY CONTRACTOR AS NEEDED).

- LEGEND:**
- REMOVE EXISTING GRAVEL SURFACE
  - PAVEMENT EXCAVATION LIMIT
  - INLET PROTECTION
  - STABILIZED CONSTRUCTION ENTRANCE
  - NPDES CONSTRUCTION STORMWATER DISCHARGE MONITORING POINT
  - INTERCEPTOR SWALE

- GENERAL NOTES:**
1. SEE PLANT LISTS AND DETAILS ON SHEET LD1.
  2. FINAL DISPOSITION OF THE EXISTING SAND FILTER VAULT HAS NOT BEEN DETERMINED. WORK ON THAT VAULT SHOWN IN THIS PLAN SET MAY OR MAY NOT BE REQUIRED DEPENDING ON THE OUTCOME OF FUTURE COORDINATION WITH THE CITY.

CITY OF SAMMAMISH APPROVAL	
City Engineer	Date
Community Development	Date



Exhibit 7  
SSDP2016-00414  
000034

60% REVISED REVIEW SUBMITTAL  
NOT FOR CONSTRUCTION

PLOTTED BY: purguban DATE: Monday, July 10, 2017 11:04:38 AM  
 PATH: U:\PSD\Projects\Clients\1521-KingCo\_S4-1521-075-ELST\985\SCADD\Phase 21\Y03\DWG\

REVISIONS	DATE	BY	DESIGNED
			J. JUN
			B. PURGANAN
			P. JOHANNESSEN
			Y. HO

ONE INCH AT FULL SCALE.  
IF NOT, SCALE ACCORDINGLY

FILE NAME:  
BL1521075P21T03SP-01

JOB No.  
554-1521-075 P21T03

DATE  
OCTOBER 2016



**Parametrix**  
ENGINEERING, PLANNING, ENVIRONMENTAL SCIENCES

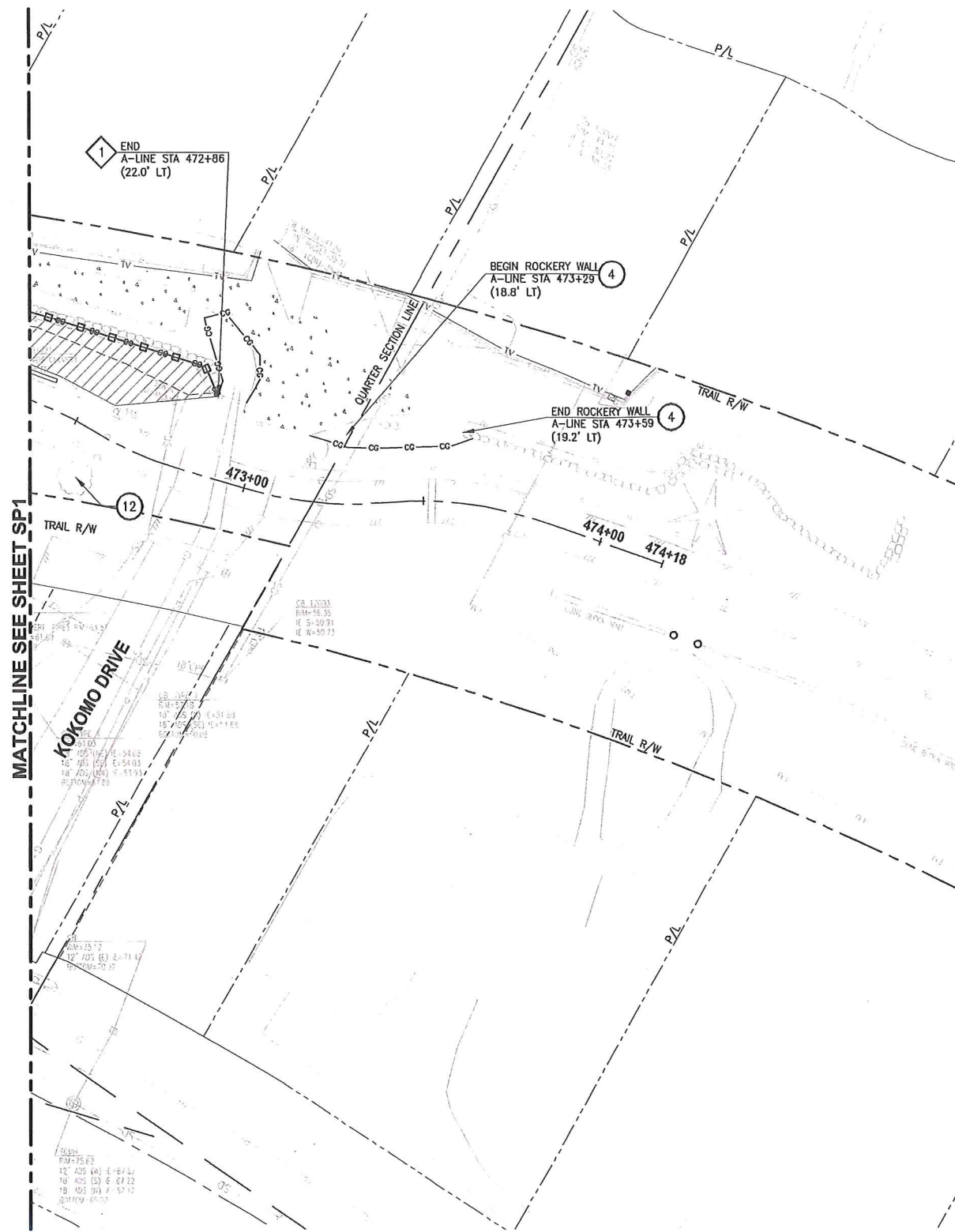
719 2ND AVENUE, SUITE 200 | SEATTLE, WA 98104  
P 206.394.3700  
WWW.PARAMETRIX.COM

PROJECT NAME  
**EAST LAKE SAMMAMISH  
MASTER PLAN TRAIL  
INGLEWOOD HILL ROAD PARKING LOT  
SAMMAMISH, WA**

**TESC/SITE PREPARATION PLAN**

SHEET NO.  
5 OF 29  
**SP1**

SEC'S 8, 17 TWP. 24 N., RGE. 06 E, W.M.



MATCHLINE SEE SHEET SP1



**SITE PREPARATION NOTES:**

- 1 REMOVE AND SALVAGE CHAIN LINK FENCE.
- 2 REMOVE AND DISPOSE STAIR.
- 3 ADJUST MANHOLE TO FINISHED GRADE. (SEE GENERAL NOTE 1)
- 4 REMOVAL OF STRUCTURE AND OBSTRUCTION.
- 5 REMOVE AND SALVAGE GUARDRAILS.
- 6 REMOVE AND SALVAGE CHAIN LINK GATE.
- 7 REMOVE TREE OR HEDGE.
- 8 INSTALL TEMPORARY SAFETY FENCE. SEE SPECIAL PROVISIONS.
- 9 REMOVE AND SALVAGE WOOD BOARD FENCE.
- 10 ADJUST METAL GRATE TO FINISHED GRADE. (SEE GENERAL NOTE 1)
- 11 PRESERVE AND PROTECT SEWER LINE.
- 12 EXISTING TREE TO REMAIN (DO NOT DISTURB).

**TESC NOTES:**

- 1 SILT FENCE PER WSDOT STANDARD DETAIL 1-30.15-02.
- 2 TRIANGLE SILT DIKE.
- 3 STORM DRAIN INLET PROTECTION, PER WSDOT STANDARD DETAIL 1-40.20-00.
- 4 STABILIZED CONSTRUCTION ENTRANCE, PER WSDOT STANDARD DETAIL 1-80.10-02.
- 5 METAL GRATE INLET PROTECTION, SEE DETAIL SHEET TD1.
- 6 TEMPORARY BYPASS.
- 7 STAGING AND STOCKPILING AREA (ADJUSTED BY CONTRACTOR AS NEEDED).

**LEGEND:**

- REMOVE EXISTING GRAVEL SURFACE
- PAVEMENT EXCAVATION LIMIT
- INLET PROTECTION
- STABILIZED CONSTRUCTION ENTRANCE
- NPDES CONSTRUCTION STORMWATER DISCHARGE MONITORING POINT
- INTERCEPTOR SWALE

**GENERAL NOTES:**

1. SEE PLANT LISTS AND DETAILS ON SHEET LD1.
2. FINAL DISPOSITION OF THE EXISTING SAND FILTER VAULT HAS NOT BEEN DETERMINED. WORK ON THAT VAULT SHOWN IN THIS PLAN SET MAY OR MAY NOT BE REQUIRED DEPENDING ON THE OUTCOME OF FUTURE COORDINATION WITH THE CITY.

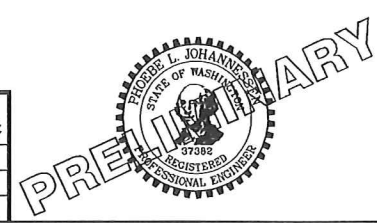
**Exhibit 7**  
**SSDP2016-00414**  
**000035**

**60% REVISED REVIEW SUBMITTAL**  
**NOT FOR CONSTRUCTION**

CITY OF SAMMAMISH APPROVAL	
City Engineer	Date
Community Development	Date

REVISIONS	DATE	BY	DESIGNED
			J. JUN
			B. PURGANAN
			P. JOHANNESSEN
			Y. HO

**ONE INCH AT FULL SCALE.**  
**IF NOT, SCALE ACCORDINGLY.**  
FILE NAME:  
BL1521075P21T03SP-01  
JOB No.  
554-1521-075 P21T03  
DATE  
OCTOBER 2016



**Parametrix**  
ENGINEERING, PLANNING, ENVIRONMENTAL SCIENCES  
719 2ND AVENUE, SUITE 200 | SEATTLE, WA 98104  
P 206.394.3700  
WWW.PARAMETRIX.COM

PROJECT NAME  
**EAST LAKE SAMMAMISH  
MASTER PLAN TRAIL  
INGLEWOOD HILL ROAD PARKING LOT**  
SAMMAMISH, WA

**TESC/SITE PREPARATION PLAN**

SHEET NO.  
6 OF 29  
**SP2**

LAYOUT: SP2 PATH: U:\PSS\Projects\Clients\1521-KingCo\564-1521-075-ELST-985Sec\CA00\Phase 21\T03\075.dwg PLOTTED BY: purgaban DATE: Monday, July 10, 2017 11:05:00 AM