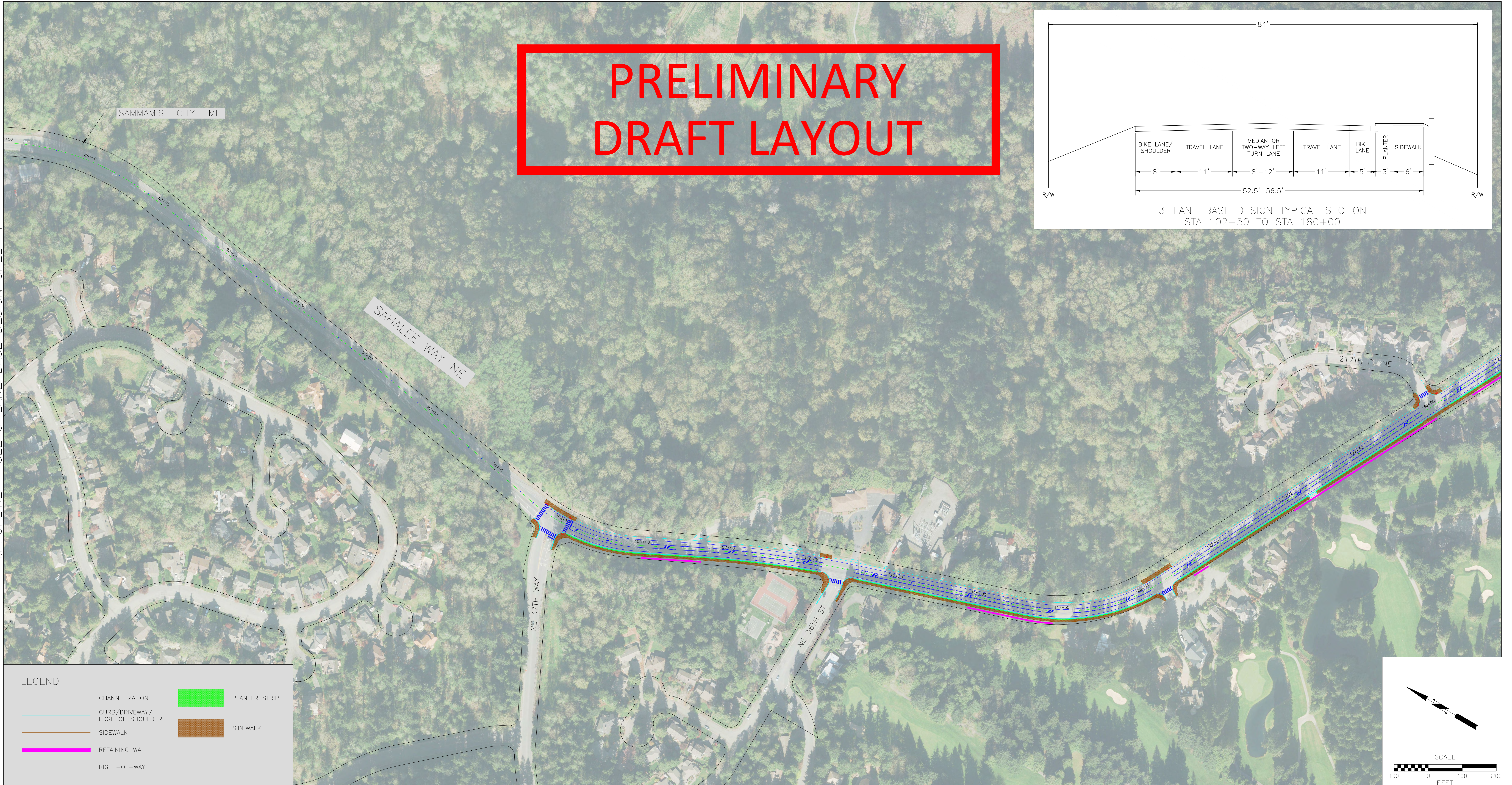
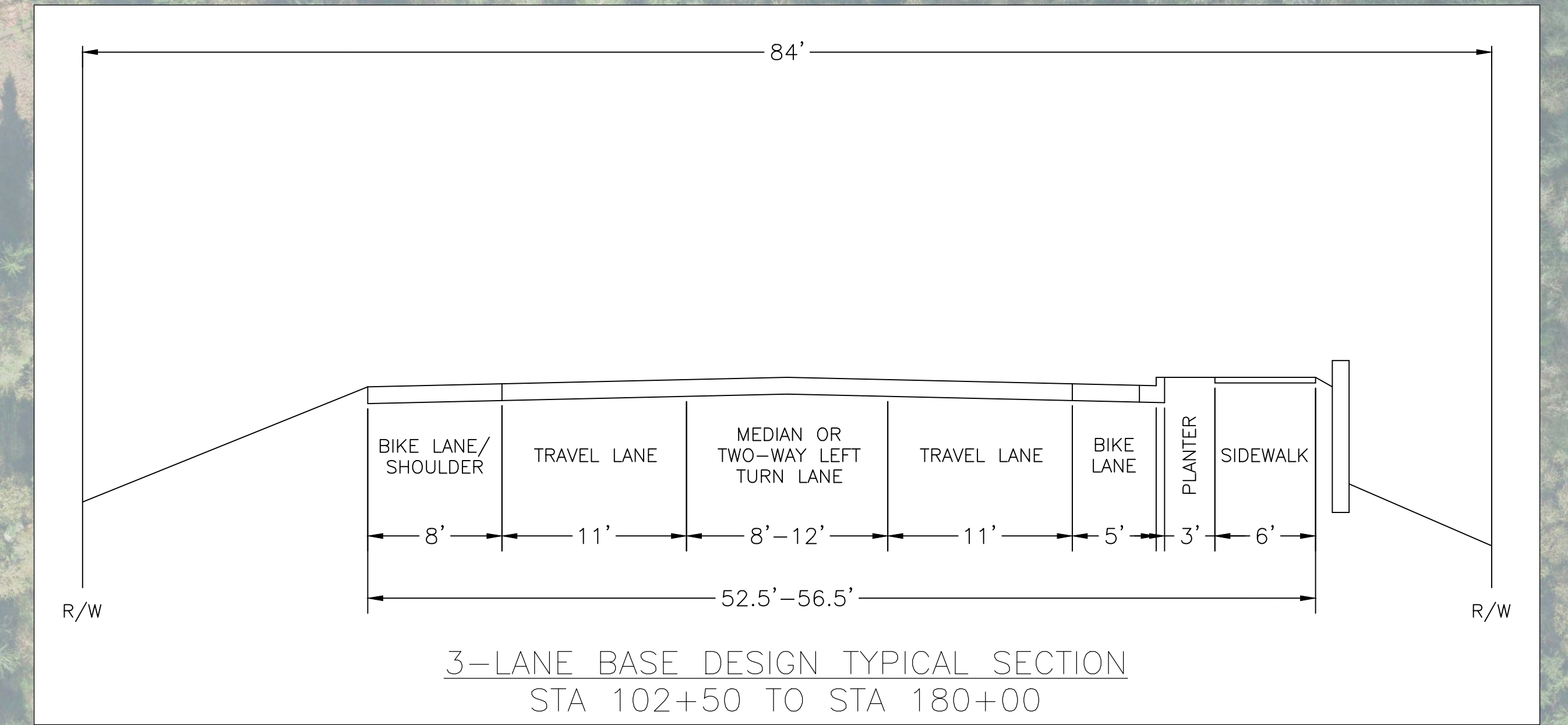


PRELIMINARY DRAFT LAYOUT



MATCHLINE - SEE 3-LANE BASE DESIGN SHEET 1

MATCHLINE - SEE 3-LANE BASE DESIGN SHEET 3

No.	Date	Revision	By	Appr.



Perteet
425-252-7700 | 1-800-615-9900
2707 Colby Avenue, Suite 900
Everett, Washington 98201

Drawn By	Date	SCALE
BMP	9/22/15	Horiz 1"=100'
Designed By	9/22/15	Vert NONE
BMP	9/22/15	Project Number
Checked By	9/22/15	
JAT		
Approved By		

CITY OF SAMMAMISH
SAHALEE WAY CORRIDOR WIDENING
3-LANE BASE DESIGN

Drawing No.	
Sheet No.	2
of Total	3