



City of Sammamish

Issaquah-Fall City Road Improvements Project

Phase I Design: 242nd Avenue SE to Klahanie Drive SE

Community Workshop #2: Design Options and Traffic Analysis



Wednesday, July 13, 2016, 6 – 8 pm
Shepherd of the Hills Lutheran Church



Meeting Agenda

6:00 p.m. – Welcome and sign-in

6:05 p.m. – Presentation

- Project overview
- Design options
- Brief Q & A

6:35 p.m. – Open house stations

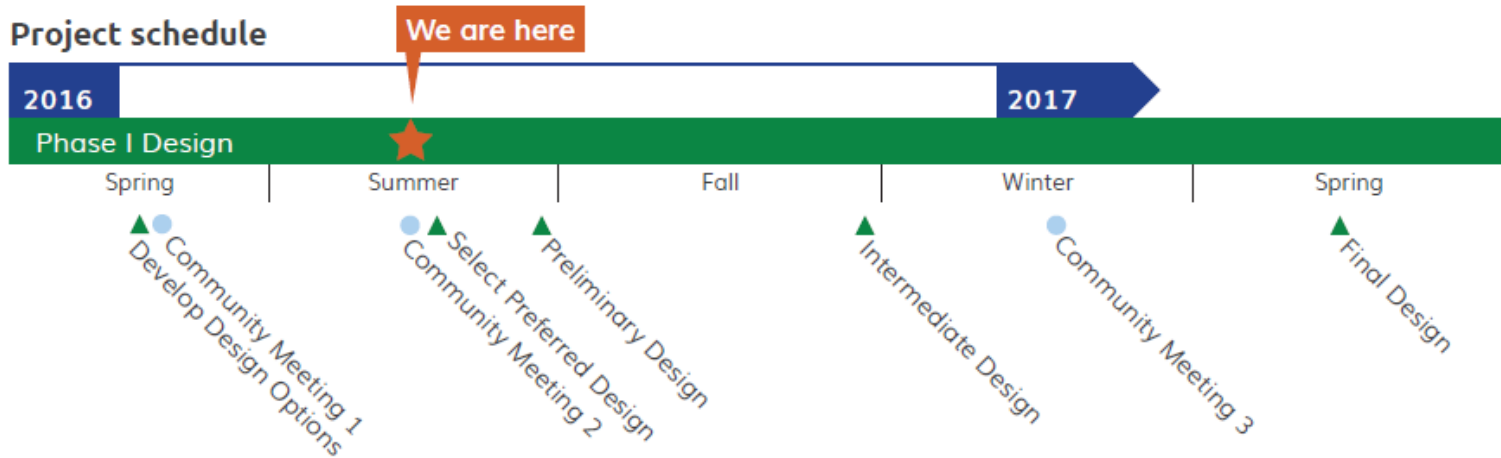
- View design options
- Provide feedback
- Talk to project staff

8:00 p.m. – Event ends



Project Timeline

Project schedule



Phase I Construction:
Anticipated 2017/2018

Phase II Design:
Planned 2018/2019

Phase II Construction:
Anticipated 2020/2021

Community outreach and
City Council updates will
be ongoing throughout the
duration of the project.

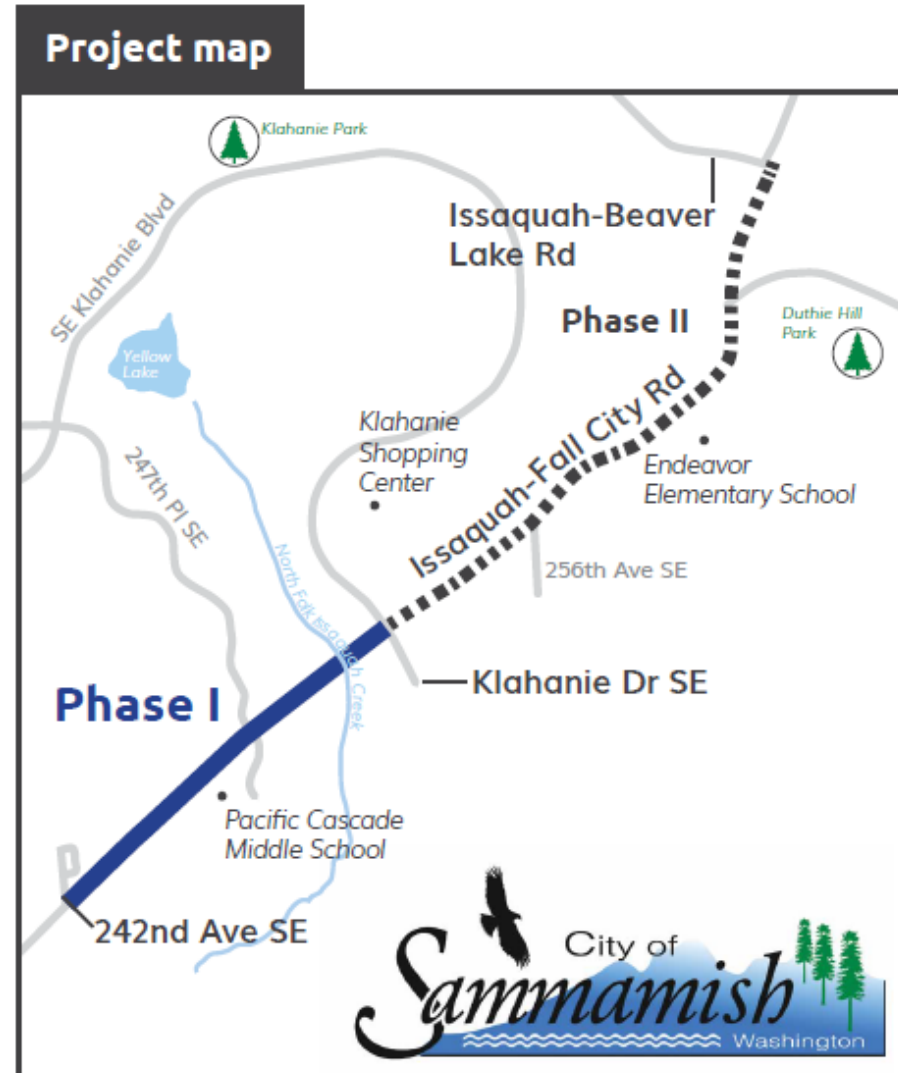
July 13, 2016



Project Overview

Phase I Design: 242nd Avenue SE to Klahanie Drive SE

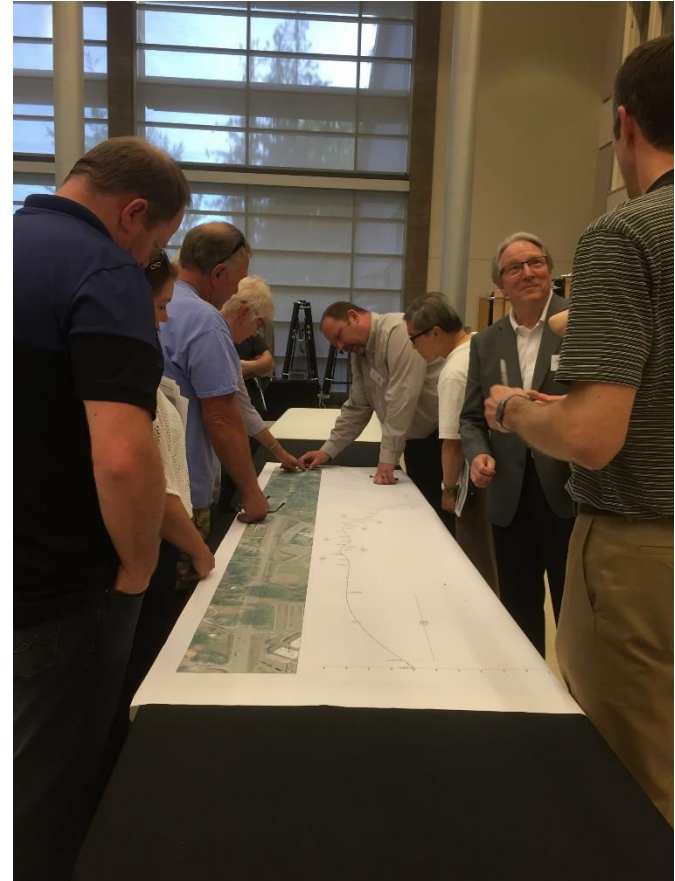
- Improve safety
- Increase capacity
- Protect environmentally sensitive areas





What We've Heard

- Roadway width and bike lanes
- Roundabouts vs. traffic signals
- Concern for pedestrian safety at crossings
- Interest in protecting green space and trails
- Concern for increased noise levels



July 13, 2016



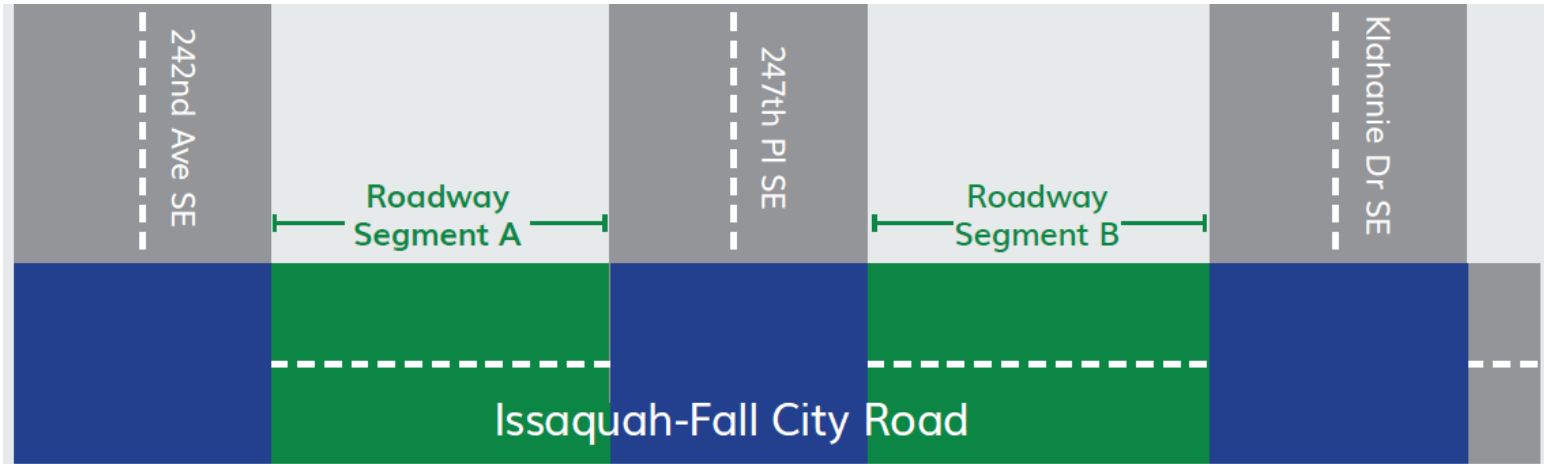
Design Elements for All Options

1. Buffered bike lane
2. Amenity zone
3. Enhanced landscaping
4. Lighting
5. Sidewalk





Intersection and Segment Design Options



242nd Ave SE Intersection Options:

1. Leave as-is
2. Roundabout

Segment A Options:

1. 4-lane
2. 5-lane

247th PI SE Intersection Options:

1. Traffic signal improvements
2. Roundabout

Segment B Options:

1. 4-lane
2. 5-lane

Klahanie Dr SE Intersection Options:

1. Traffic signal improvements:
 - 1 left-turn lane, 2 through lanes
 - 2 left-turn lanes, 1 through lanes
 - 2 left-turn lanes, 2 through lanes
2. Roundabout



Design Evaluation Factors

- Safety
- Operations: Opening year
- Operations: Future
- Cost
- Maintenance
- Environment
- Right-of-way
- Aesthetics

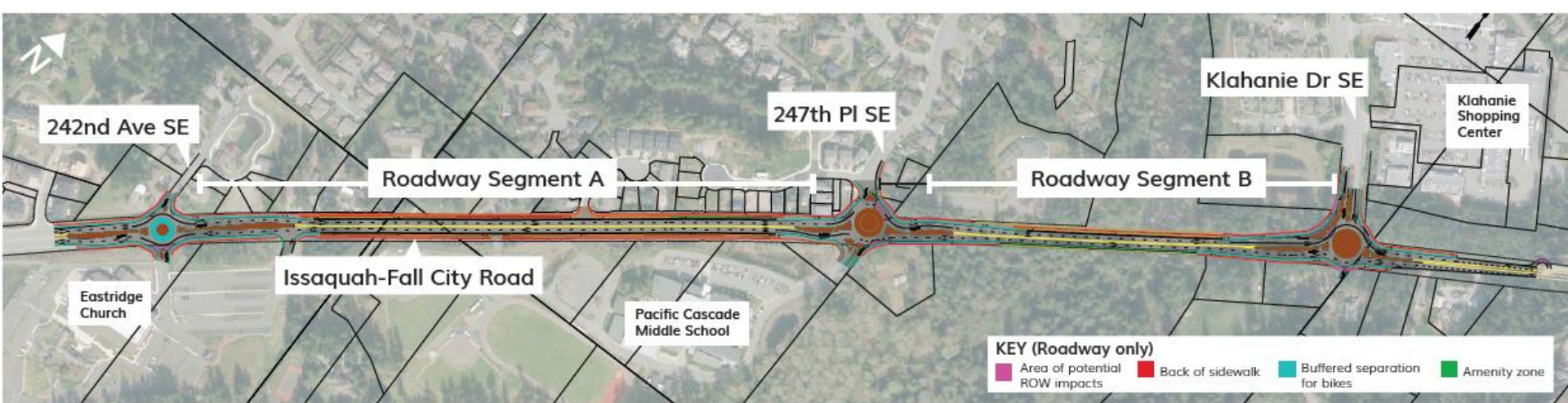


July 13, 2016



Design Option 1

- 242nd Intersection: Roundabout
- Roadway Segment A: 4-lanes
- 247th Intersection: Roundabout
- Roadway Segment B: 4-lanes
- Klahanie Intersection: Roundabout
- Cost: \$14.9 M - \$15.6 M





Design Option 2

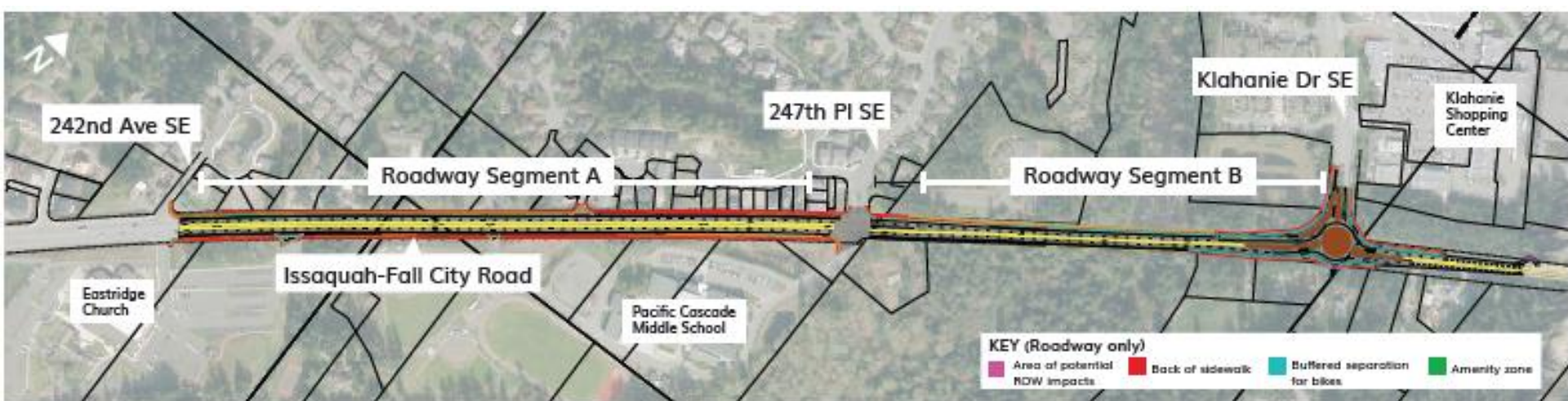
- 242nd Intersection: No improvements (as is today)
- Roadway Segment A: 5-lane
- 247th Intersection: Roundabout
- Roadway Segment B: 4-lane
- Klahanie Intersection: Roundabout
- Cost: \$16.7 M - \$17.4 M





Design Option 3

- 242nd Intersection: No improvements (as is today)
- Roadway Segment A: 5-lane
- 247th Intersection: Signal
- Roadway Segment B: 4-lane
- Klahanie Intersection: Roundabout
- Cost: \$17.6 M - \$18.3 M





Design Option 4

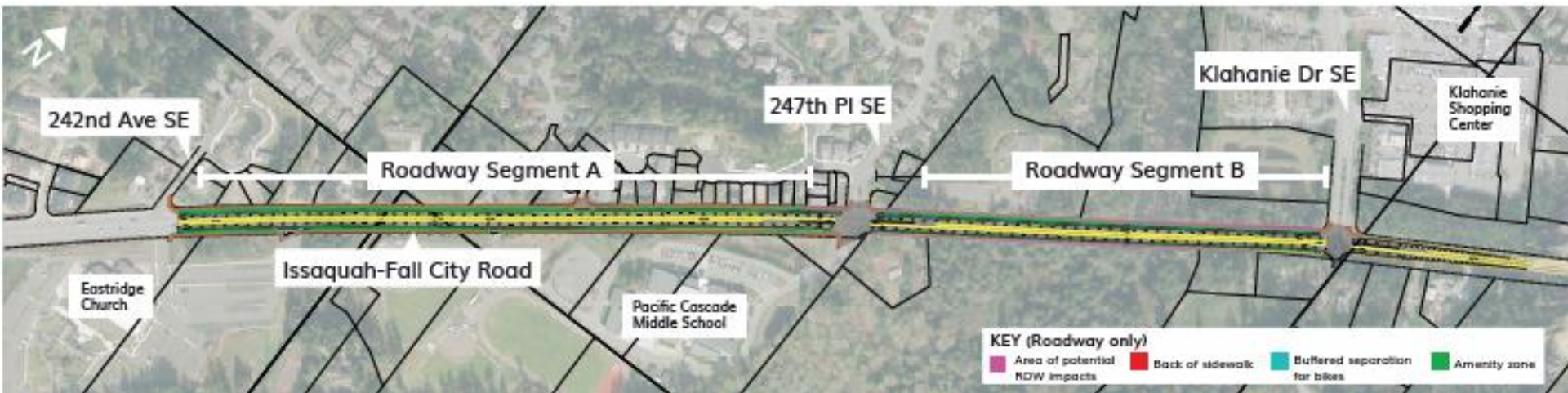
- 242nd Intersection: No improvements (as is today)
- Roadway Segment A: 5-lane
- 247th Intersection: Roundabout
- Roadway Segment B: 5-lane
- Klahanie Intersection: Signal
- Cost: \$17.9 M - \$18.8 M





Design Option 5

- 242nd Intersection: No improvements (as is today)
- Roadway Segment A: 5-lane
- 247th Intersection: Signal
- Roadway Segment B: 5-lane
- Klahanie Intersection: Signal
- Cost: \$17.4 M - \$18.8 M





Design Options Summary

	242 nd Intersection	Roadway Section A	247 th Intersection	Roadway Section B	Klahanie Intersection	Planning Level Cost Estimate (millions)
No Build	No Change	2-Lanes	Signal	2-Lanes	Signal	N/A
Option 1	Roundabout	4-Lanes	Roundabout	4-Lanes	Roundabout	\$14.9 - \$15.6
Option 2	No Change	5-Lanes	Roundabout	4-Lanes	Roundabout	\$16.7 - \$17.4
Option 3	No Change	5-Lanes	Signal	4-Lanes	Roundabout	\$17.6 - \$18.3
Option 4	No Change	5-Lanes	Roundabout	5-Lanes	Signal	\$17.9 - \$18.8
Option 5	No Change	5-Lanes	Signal	5-Lanes	Signal	\$17.4 - \$18.8



Culvert Replacement Options

- Culvert replacement will occur as part of roadway improvements
- Cost, maintenance, environmental and construction impacts will be considered
- Roadway at the stream crossing will have a sidewalk only the north side of the road.





Questions?



July 13, 2016





Thank you

We want to hear from you! Please join us at the following stations to provide your feedback on the design options for the future roadway:

Station 1: Overview

Station 2: Roll Plots

Station 3: Design Options

Station 4: Intersection Simulations

Station 5: Stream Crossing/Culvert

Sam Park, Project Manager

spark@sammamish.us

425-295-0538

Submit comments online:

<https://www.sammamish.us/departments/publicworks/projects/IssFallCityRoadWidening.aspx>

July 13, 2016





Traffic Simulations



July 13, 2016



Traffic Simulations



July 13, 2016